

SPDRs S&P 500 Trust Series ETF 382,82 383,01 379,65 **382,40** -0,51 -0,13%

2022
Onsdag 28. desember

NY S&P OPPTREND, ELLER RE-TEST AV OKTOBER BUNNEN?



INSIDE OSLO BØRS

Teknisk Aksjeanalyse Rapport 10:36:52 [Log](#)

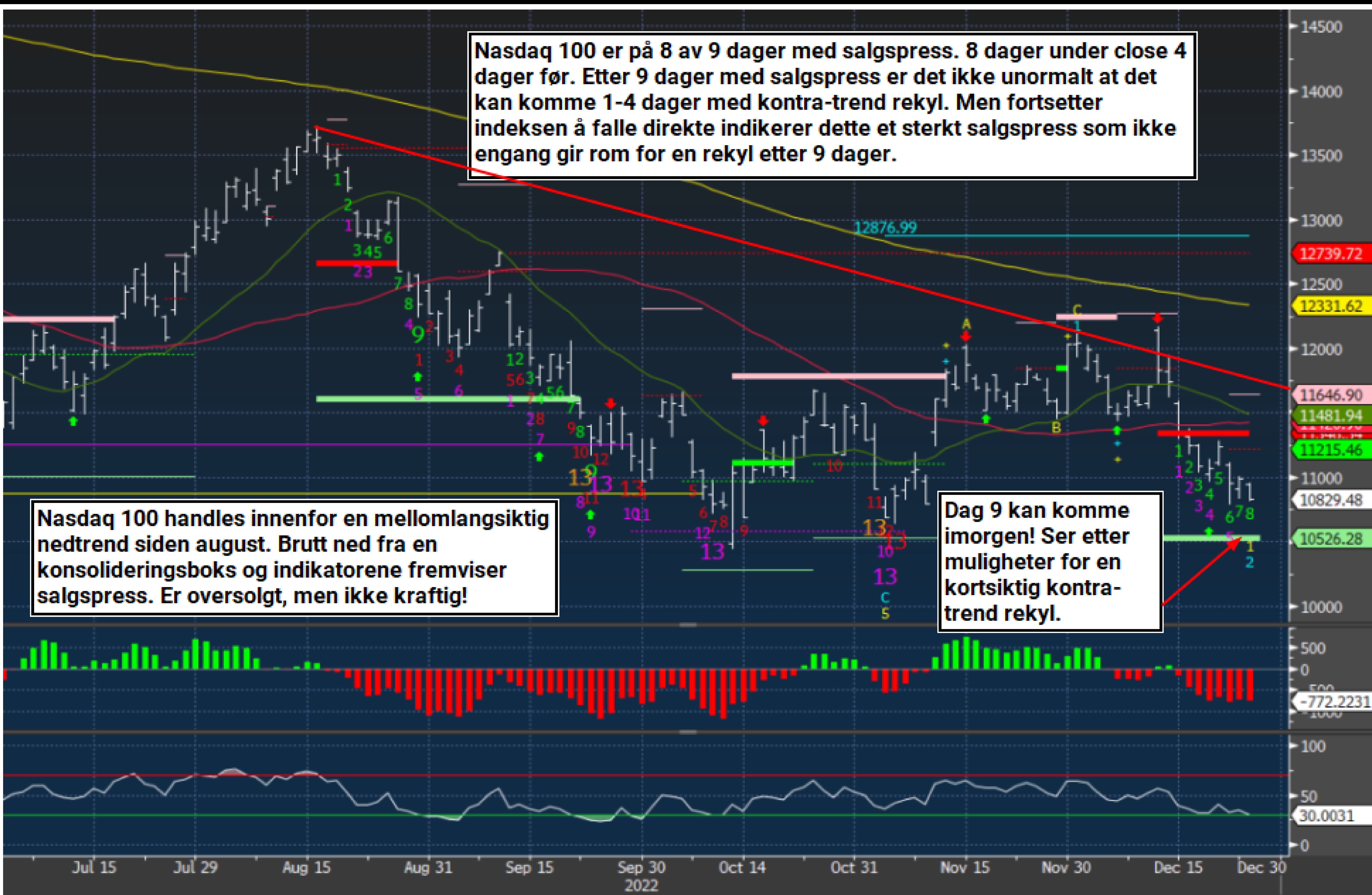
S&P 500 - NEGATIVE TEKNISKE SIGNALER!

Kolonnen til høyre viser det prosentvise volumet sammenlignet med dagen før!

Sym	Price	% Change	Vol Buzz
SPY	381,46	-0,38%	-50,8%
QQQ	263,58	-1,41%	-49,2%
SMH	199,84	-1,79%	-46,5%
DIA	332,37	+0,13%	-28,5%
IWM	173,26	-0,65%	-57,4%
UUP	27,97	-0,04%	-39,2%
HYG	73,62	-1,04%	-47,5%
TLT	100,14	-1,98%	-1,5%
SQQQ	55,83	+4,36%	-34,4%
TQQQ	16,84	-4,26%	-40,3%
LABU	6,02	-8,65%	-1,8%
LABD	20,57	+8,84%	-54,4%
SPXS	22,46	+1,08%	-43,7%
SPXL	61,82	-1,14%	-35,5%
UVXY	7,00	-0,85%	-49,7%
VIX--X	21,82	+4,55%	N/A
TAN	73,08	-2,38%	-22,7%
FAN	17,19	+0,82%	-19,9%
PBD	18,24	-0,92%	+48,6%
\$NYEA	1070,0	-28,33%	N/A
\$NYED	992,00	+77,14%	N/A
\$NSDA	1146,0	-35,62%	N/A
\$NSDD	2262,0	+42,00%	N/A
USO	69,53	+0,30%	-26,0%
XLE	87,99	+1,07%	-36,2%
OIH	303,81	+0,59%	-48,9%
GUSH	151,65	+1,17%	-42,2%
XNG--X	550,31	+0,65%	N/A
FCG	25,01	+0,77%	-59,9%
EQNR	37,13	+0,30%	-47,5%
BDRY	9,50	+0,42%	+53,0%
GOGL	9,20	-0,22%	-72,3%
AAPL	130,04	-1,38%	-29,9%
MSFT	236,96	-0,74%	-43,8%
TSLA	109,10	-11,41%	+123,9%
AMZN	83,04	-2,59%	-27,6%



NASDAQ 100 - DEMARK ER PÅ 8 AV 9 DAGER MED SALGSPRESS!



Nasdaq 100 er på 8 av 9 dager med salgspress. 8 dager under close 4 dager før. Etter 9 dager med salgspress er det ikke unormalt at det kan komme 1-4 dager med kontra-trend rekyl. Men fortsetter indeksen å falle direkte indikerer dette et sterkt salgspress som ikke engang gir rom for en rekyl etter 9 dager.

Nasdaq 100 handles innenfor en mellomlangsigtig nedtrend siden august. Brutt ned fra en konsolideringsboks og indikatorene fremviser salgspress. Er oversolgt, men ikke kraftig!

Dag 9 kan komme imorgen! Ser etter muligheter for en kortsiktig kontra-trend rekyl.

FORTSATT SALGSPRESS I MEGA CAPS!

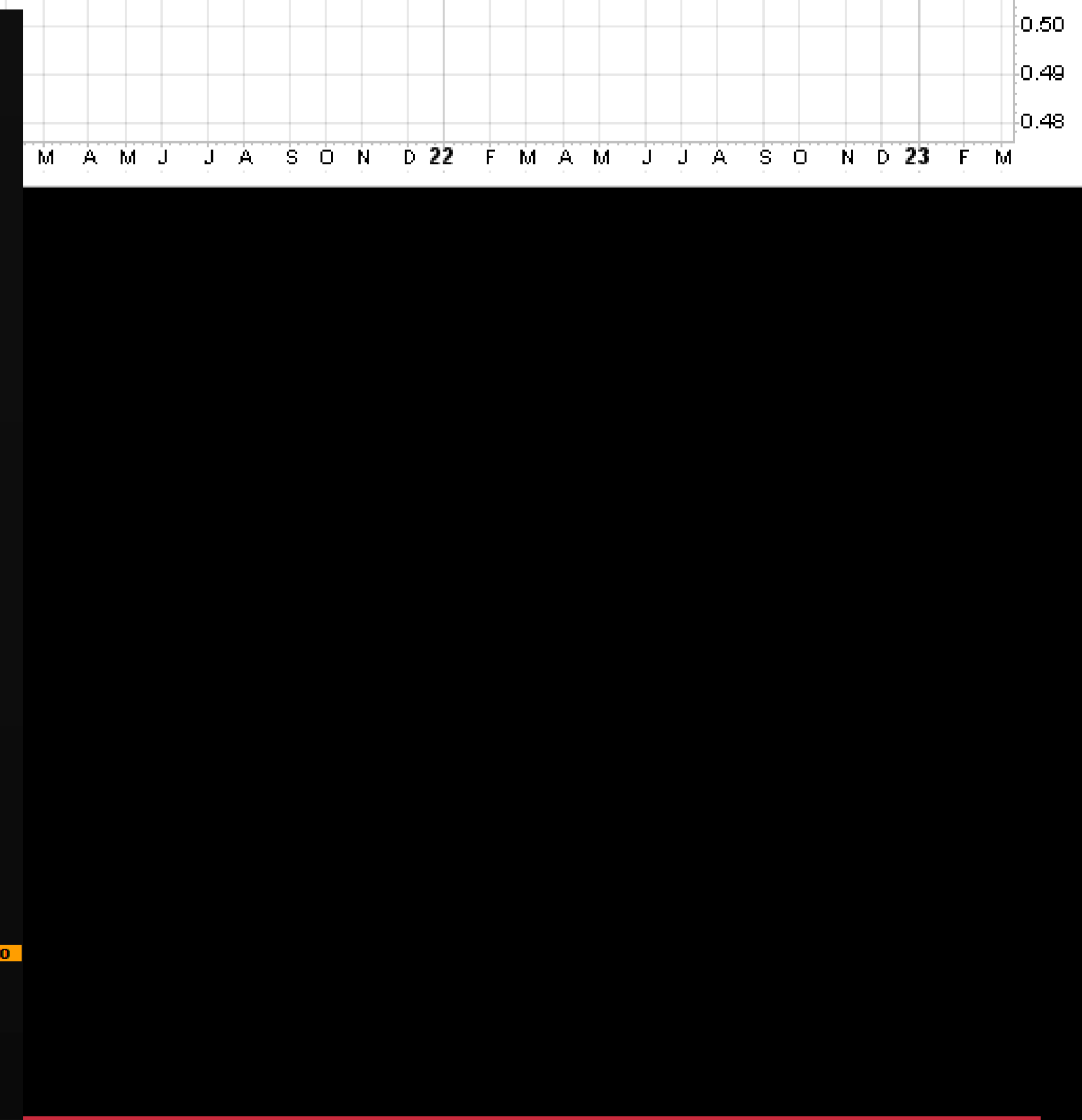
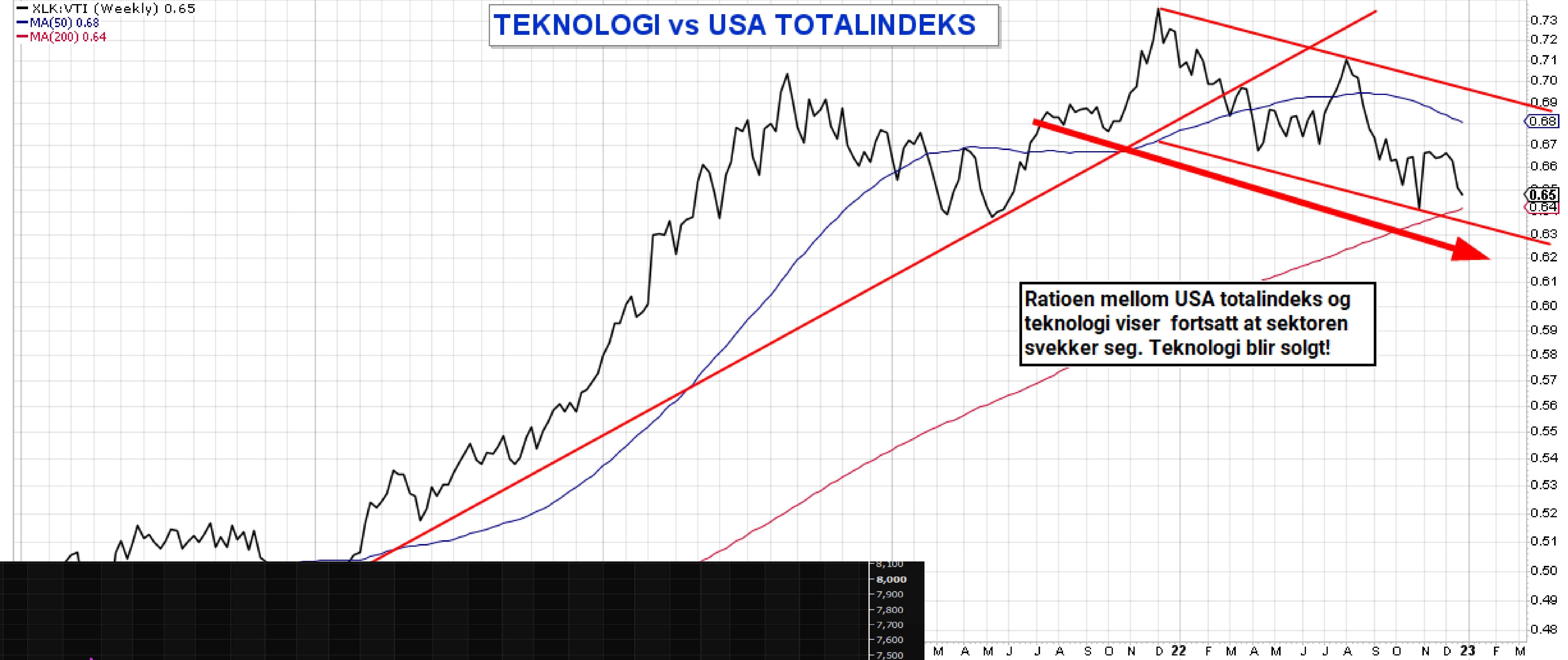
XLK:VTI Technology Select Sector SPDR Fund/Vanguard Total Stock Market ETF NYSE + BATS

27-Dec-2022 3:03pm

— XLK:VTI (Weekly) 0.65
— MA(50) 0.68
— MA(200) 0.64

TEKNOLOGI vs USA TOTALINDEKS

Open 0.65 High 0.65 Low 0.64 Last 0.65 Chg -0.00 (-0.52%)



FORTSATT SALGSPRESS I MEGA CAPS!

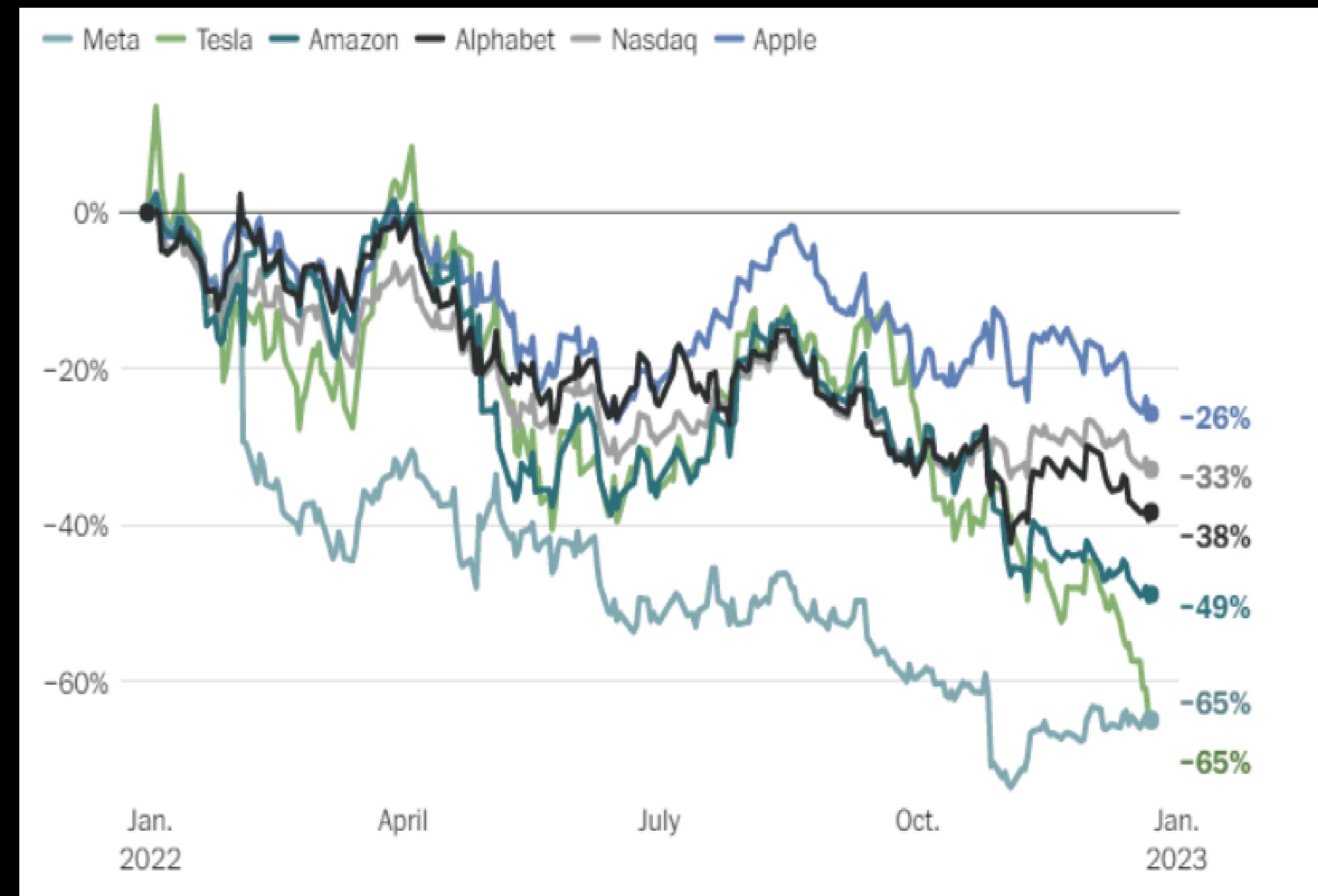
Fra en hedgefond forvalter jeg mottar kommentarer fra: The staggering money these guys made in the recent bubble is probably the bigger story. Perhaps this is simply mean reversion in a bear market. They have been through it several times, as bear markets tend to see 50% or more reversals. The two CEOs who are still active are to blame for decisions that will be considered wrong. The pivot to the "Metaverse" or buying Twitter is taking the focus off Tesla at a critical time and will be looked back at in history as huge blunders.

Several of the stocks will rebound over time and make new highs; some won't make new highs. Meta and Tesla are the ones I believe will never see all-time highs again. After the tech bubble burst in 2000, it took Microsoft and Amazon many years to regain new highs. It might take years or a decade before some of these see new highs again. This doesn't mean they can't be traded.

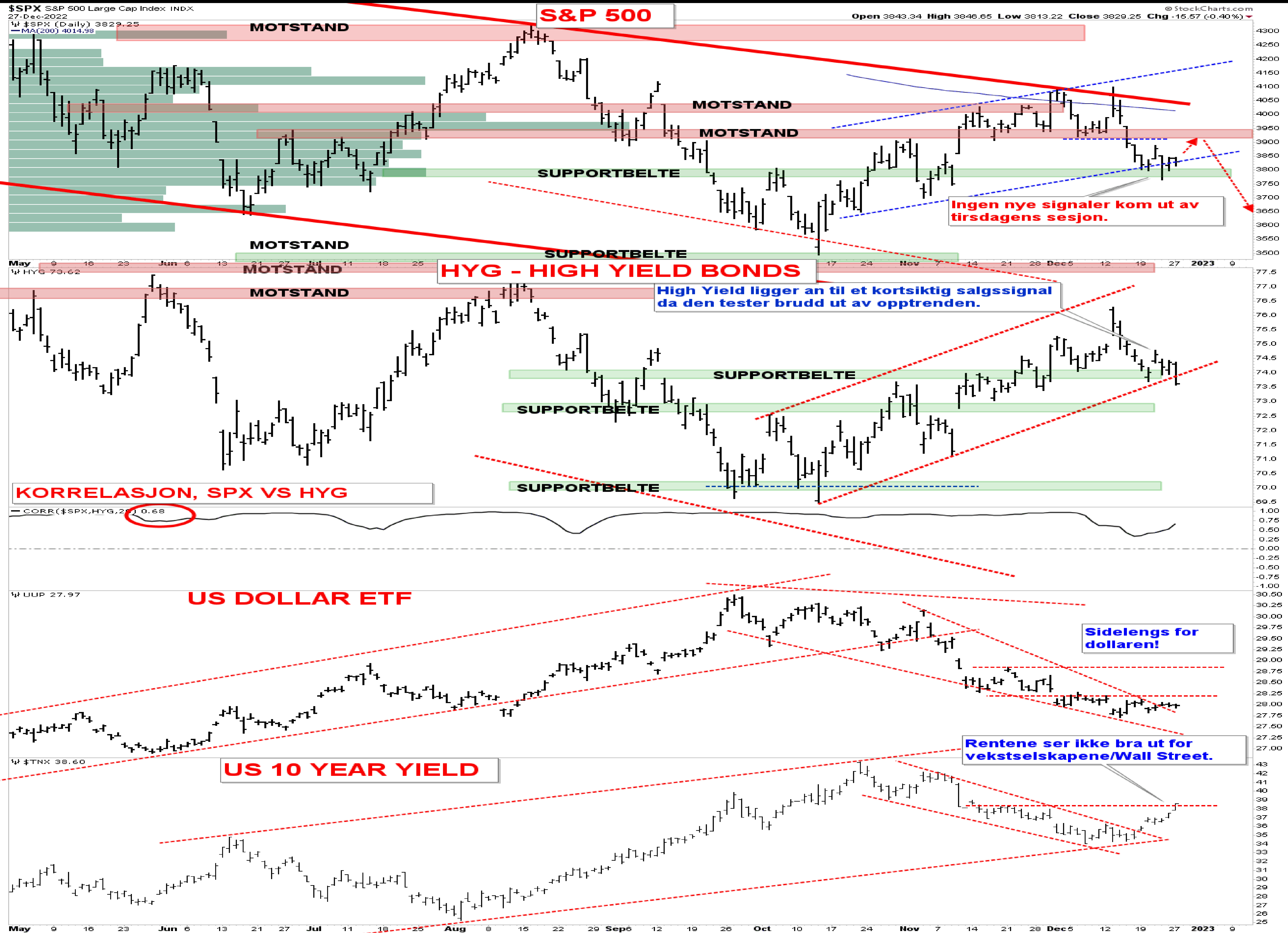
Buy and hold is likely dead as the economy is going into a recession in 2023, and earnings will need to be reset in the coming quarters. There is a balance between the reset and price, which involves investor/trader positioning. As the markets have sold off heading into Q1 earnings, will these and other stocks be oversold enough to rally by meeting lowered expectations? If the markets rally in the next few weeks, the risk of missing estimates with stock declines will increase. This is the balancing act in 2023, which I anticipate will dominate the markets and trading.

Heading into the end of the year, there remains the risk of tax loss selling increasing. Seeing Tesla hitting new lows with Nvidia selling off hard as well could be that large Asian trader who amassed huge positions in these hitting the bid hard. Perhaps it's margin calls? Microstrategy is another highly levered company – to Bitcoin no less, and is also getting sold hard today.

The seven mega billionaires have done a lot of selling over the years to diversify. Only Elon Musk is at risk of being overleveraged with his Twitter purchase and funding of the other companies he founded. None of the other companies make real money, including Space X. Every cycle ends with some substantial number of people losing everything. Companies go bankrupt and shut down. We haven't seen any of that yet. With that in mind, I do not believe we are yet at or near the bottom.



S&P 500 vs STYRINGSFAKTORER



S&P 500 - 120 MIN - BYGGER NY NEDTREND?



S&P 500 - 60 MIN - KORTSIKTIG NEDTREND?

\$SPX S&P 500 Large Cap Index INDX
27-Dec-2022
\$SPX (60 min) 3829.25

© StockCharts.com

S&P - KORTERE 60 MIN CHART

Open 3843.34 High 3846.65 Low 3813.22 Close 3829.25 Chg -15.57 (-0.40%)



Det tekniske ser svakt ut og det er bra med nedsidemomentum. Bredden er også negativ. Under 3795 og S&P skal lavere!

S&P 500- 15 MIN - HAR VI ALLEREDE FÅTT RE-TESTEN?

\$SPX S&P 500 Large Cap Index INDX

27-Dec-2022

RSI(14) 46.78

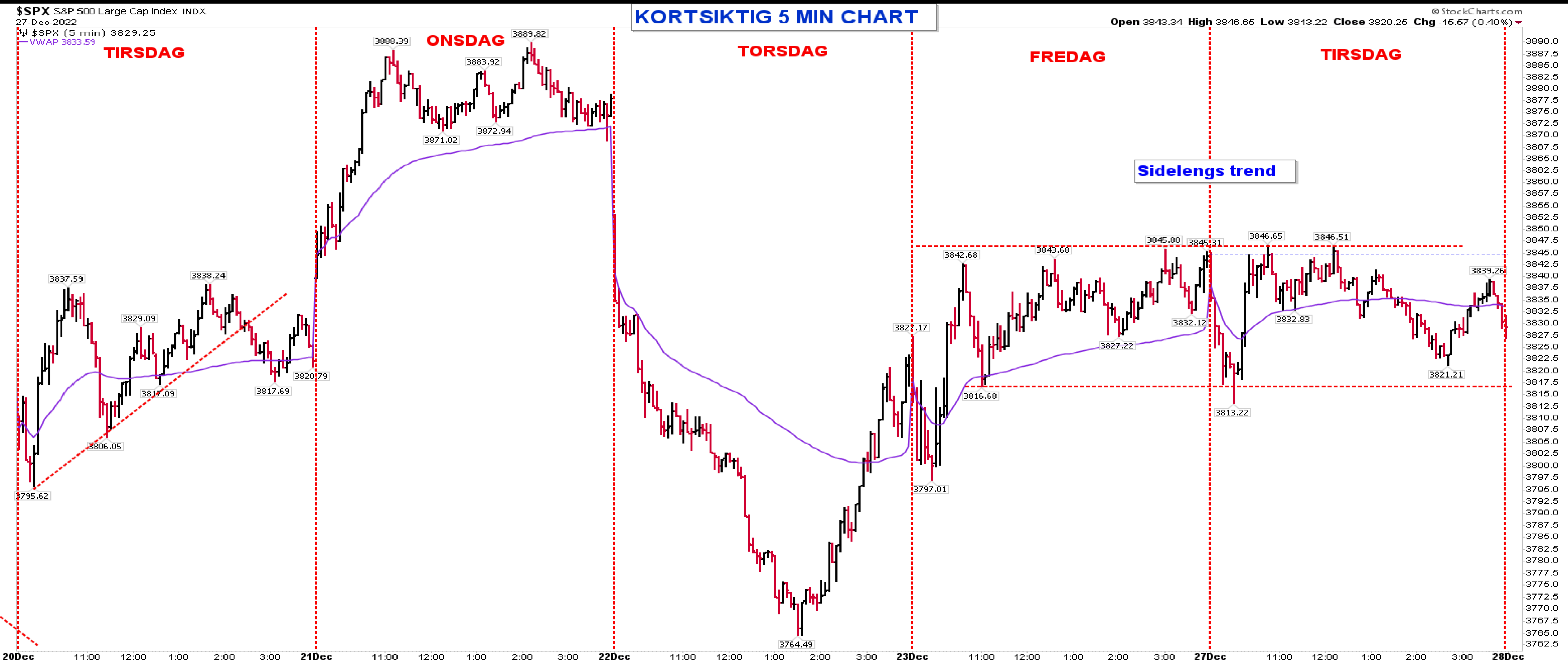
© StockCharts.com

UTVIKLINGEN SISTE 15 DAGER - 15 MIN CHART

Open 3843.34 High 3846.65 Low 3813.22 Close 3829.25 Chg -15.57 (-0.40%)



S&P 500- 5 MIN - SISTE UKES UTVIKLING!



% av aksjer som stiger/faller i S&P sektorene

Consumer Discretionary	33.87%		66.13%
Consumer Staples	18.75%		81.25%
Energies	8.33%		91.67%
Financials	44.26%		55.74%
Health Care	51.85%		48.15%
Industrials	27.42%		72.58%
Information Technology	50.79%		49.21%
Materials	22.22%		77.78%
Real Estate	56.25%		43.75%
Communication Services	76.19%		23.81%
Utilities	7.14%		92.86%

OSLO BØRS

Watchlist - OSLO BIG CAPS

Symbol	N	Last	L +/-%	Turnover	RSI14	1M +/-%	+/-% EMA1	High MTD
NEL		13,650	0,8%	35m	48	-8,1%	-3%	15,64
AKER		738,000	0,5%	17m	55	-3,7%	1%	768,50
STB		85,360	0,5%	38m	55	-3,4%	1%	88,56
TEL		90,280	0,5%	96m	44	-10,2%	0%	96,46
EQNR	🏠	365,500	0,4%	1 000m	53	-0,3%	0%	380,50
AKRBF		310,800	0,4%	131m	48	-8,0%	1%	342,20
MOWI		165,650	0,2%	93m	65	6,8%	2%	167,45
TOM		164,500	0,2%	30m	35	-12,0%	-7%	204,70
YAR		431,400	0,2%	67m	47	-7,7%	0%	459,00
SALM		379,000	0,1%	41m	64	11,1%	2%	383,20
GJF		191,900	0,0%	14m	52	0,5%	0%	194,30
DNB		193,150	-0,1%	68m	66	2,1%	2%	194,65
ORK		70,260	-0,3%	42m	47	1,2%	0%	71,76
SCHA		186,100	-0,5%	22m	51	0,2%	-2%	201,00
BAKKA		610,000	-0,7%	13m	66	14,2%	2%	626,00
NHY	🏠	72,480	-0,9%	127m	52	-0,8%	1%	76,04
SCATC		79,440	-1,8%	13m	43	-4,5%	-3%	90,22
NOD		162,900	-2,0%	46m	41	-8,5%	-4%	190,80

Euronext Oslo, Equities/ETFs/Indices [OSS] - List, oversi...

All Quotes Indices Chains List Heatmap Ranking Overview

Symbol	N	Last	L +/-%	Turn	RSI14	1M +/-%	+/-% EMA	High MTD
RECSI		13,88	-0,9%	53m	34	-20,9%	-8%	17,5
NEL		13,65	0,8%	35m	48	-8,1%	-3%	15,6
TOM		164,50	0,2%	30m	35	-12,0%	-7%	204,7
SCATC		79,44	-1,8%	13m	43	-4,5%	-3%	90,2
ACC		11,51	-1,1%	7 603k	51	-6,9%	0%	12,3
AKH		13,13	-2,0%	6 049k	46	-4,5%	-3%	14,8
BCS		10,04	-4,7%	5 882k	35	-18,8%	-9%	12,8
ZAP		21,50	3,9%	5 319k	39	-28,9%	-4%	30,6
QFUEL		5,18	-4,8%	2 990k	32	-12,3%	-6%	6,8
HYPRO		28,80	-0,2%	2 169k	38	-17,7%	-8%	36,9
SAGA		1,73	-1,3%	1 298k	26	-7,6%	-3%	1,9
HPUR		22,44	-0,3%	1 165k	44	-12,2%	-5%	28,1
VOW		18,20	1,0%	847k	50	-5,8%	1%	19,7
EFUEL		38,45	-0,8%	310k	30	-18,1%	-5%	47,8
VGM		2,29	-2,6%	179k	40	-11,9%	-4%	2,6

Watchlist - 1- oljeselskaper

Symbol	N	Last	L +/-%	Turnov	RSI	1M +/-%	+/-% EMA1	H
EQNR	🏠	365,5	0,4%	1 000m	53	-0,3%	0%	
AKRBF		310,8	0,4%	131m	48	-8,0%	1%	
PGS	🏠	6,7	4,9%	75m	69	17,9%	10%	
DNO	🏠	11,7	-0,3%	50m	43	-6,8%	-2%	
SUBC		114,5	1,7%	48m	66	6,2%	3%	
VAR		34,0	0,2%	44m	50	-3,8%	0%	
TGS		135,8	2,1%	25m	59	-0,8%	4%	
AKSO		37,7	-0,1%	22m	64	6,6%	3%	
AKER		738,0	0,5%	17m	55	-3,7%	1%	
BORR		49,0	2,6%	16m	63	5,3%	7%	
NOR	🏠	405,0	2,4%	8 501k	67	5,7%	4%	
BWO		25,1	0,4%	8 382k	52	1,5%	1%	
OKEA		35,5	0,6%	7 825k	43	-7,3%	-1%	
ODL		25,8	1,6%	6 382k	59	2,0%	4%	
PEN		28,8	-0,1%	4 550k	47	-5,8%	1%	
BWE		24,4	1,8%	2 481k	49	-9,1%	-1%	

Watchlist - FLYSEKTOR, oversikt sektor

Symbol	N	Last	L +/-%	Turnov	RSI14	1M +/-%	+/-% EMA10
NAS		7,7920	-2,96%	21m	34	-11,1%	-5%
FLYR		0,0056	-3,45%	1 193k	15	-16,4%	-9%
SAS*		0,4752	0,30%	4 918k	21	-24,1%	-8%
NORSE		1,9500	-1,02%	1 523k	20	-28,6%	-7%

Watchlist - 1- shipping

Symbol	N	Last	L +/-%	Turn	RSI14	1M +/-%	+/-% EMA1	High MTD
SOFF	🏠	36,75	9,4%	71m	73	50,6%	16%	37
FRO		121,90	-0,6%	53m	39	-9,6%	-4%	145
GUGL		90,52	-0,3%	41m	56	3,2%	2%	94
MPCC		16,97	0,1%	41m	42	-6,8%	-3%	19
HAFNI		52,40	-0,6%	36m	41	-1,5%	-2%	56
WAWI		101,20	1,2%	13m	74	15,9%	3%	103
2020		95,40	1,6%	12m	70	10,0%	5%	97
FLNG		343,60	1,3%	12m	49	-7,1%	0%	372
BWLPG		81,80	0,7%	10m	44	-4,9%	-2%	89
BELCO		14,44	-2,4%	9 266k	53	4,2%	0%	15
SIOFF		13,10	6,7%	8 545k	69	13,7%	9%	13
HUNT		2,23	-0,7%	2 900k	53	-0,2%	1%	2
ALNG		8,20	-0,2%	1 704k	51	-4,4%	1%	9

Watchlist - INDUSTRI / SYKLISK, oversikt sektor

Symbol	N	Last	L +/-%	Turnov	RSI14	1M +/-%	+/-% EMA	High MTD
NHY	🏠	72,480	-0,90%	127m	52	-0,8%	1%	76,040
KOG	🏠	418,80	1,45%	27m	75	5,0%	2%	421,40
ELK		36,160	-1,04%	8 649k	53	2,6%	0%	37,540
NSKOC		67,350	1,28%	6 340k	64	11,3%	3%	68,850
KOA	🏠	2,454	0,66%	3 898k	49	-5,4%	0%	2,650

Watchlist - 1-fisk

Symbol	N	Last	L +/-%	Turn	RSI14	1M +/-%	+/-% EMA	High MTD
MOWI		165,65	0,2%	93m	65	6,8%	2%	167,45
SALM		379,00	0,1%	41m	64	11,1%	2%	383,20
LSG		54,60	-0,7%	15m	67	13,9%	2%	56,75
BAKKA		610,00	-0,7%	13m	66	14,2%	2%	626,00
GSF		77,85	0,5%	11m	66	14,7%	4%	78,70
AUSS		88,20	0,5%	6 225k	66	8,4%	2%	90,00
SALME		8,27	-0,2%	1 561k	46	2,2%	-1%	8,90

Watchlist - rest

Symbol	N	Last	L +/-%	Turn	RSI14	1M +/-%	+/-% EMA	High MTD	MA50
KAHOT		19,41	-3,2%	30m	35	-23,0%	-5%	23,83	22,07
NYKD		27,82	-7,0%	15m	45	10,0%	-6%	34,76	27,45
AUTO		18,28	0,0%	13m	50	-9,8%	0%	20,77	19,01
ADE		64,40	-1,5%	10m	40	-20,1%	-3%	74,85	72,60
RANA		48,85	0,4%	4 501k	71	14,0%	3%	49,35	43,63
CLOUI		12,68	3,9%	4 235k	51	-7,3%	-1%	14,20	13,15
PEXIP		13,03	1,9%	3 419k	57	6,1%	-2%	14,60	11,19
IDEX		1,01	-3,0%	2 806k	41	-13,1%	-7%	1,37	1,02
NANO		1,18	-5,1%	2 527k	51	21,6%	3%	1,31	1,16
HEX		27,70	-2,7%	2 281k	41	-0,4%	-6%	32,66	27,04
MGN		21,50	-1,4%	2 169k	48	-2,9%	-1%	23,60	22,31
XXL	🏠	3,85	-2,9%	1 700k	34	-12,6%	-10%	5,36	4,43
VEI	🏠	95,20	0,0%	1 420k	55	4,7%	0%	97,80	90,94
OTOVC		19,16	-1,5%	1 334k	42	-3,0%	-3%	21,80	20,43
B2H		7,85	-1,4%	1 173k	45	-7,2%	-2%	8,74	8,09
PROT		122,60	-0,2%	992k	51	-0,2%	1%	128,80	121,69
AZT		71,60	-1,6%	987k	48	9,1%	-2%	79,40	69,40
AKBM		37,25	1,4%	870k	50	-2,1%	3%	39,45	37,79
SATS		8,44	-4,4%	766k	51	-3,5%	0%	9,50	7,75
KID		67,10	-1,3%	678k	37	-5,8%	-3%	72,00	72,32
DLTX	🏠	3,52	-1,9%	459k	40	-16,6%	-6%	4,48	4,08
PHO		105,40	-0,4%	342k	54	8,2%	-1%	112,50	99,23
NEXT		4,55	-0,7%	168k	43	1,4%	0%	4,70	4,36

OLJESEKTOREN

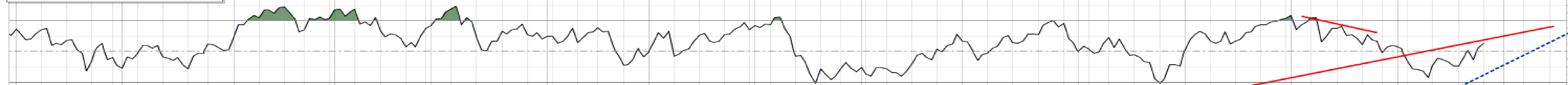
XLE Energy Select Sector SPDR Fund NYSE

27-Dec-2022
RSI(14) 55.12

XLE - ENERGY SEKTOR

Open 87.44 High 88.36 Low 87.12 Close 88.04 Volume 13.9M Chg +0.98 (+1.13%)

RSI MOMENTUM

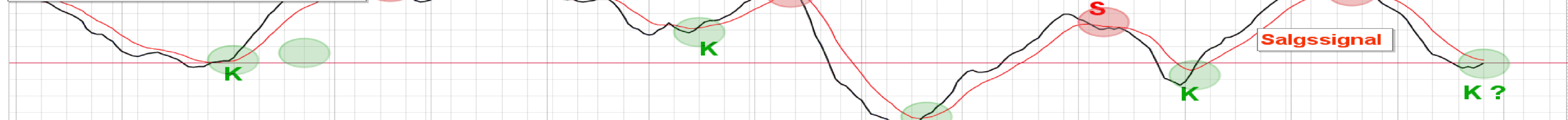


Energy Select Sector SPDR Fund (Daily) 88.04

EMA(50) 85.67
EMA(200) 77.73
Volume 13,892,573
EMA(50) 23,471,032

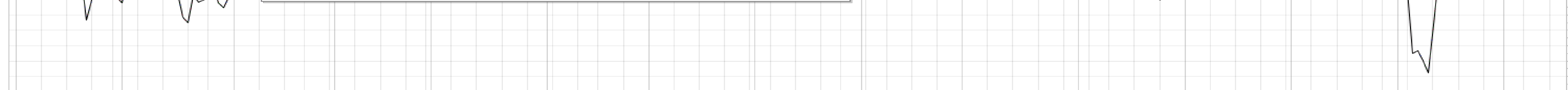


TAKTISK TRENDINDIKATOR



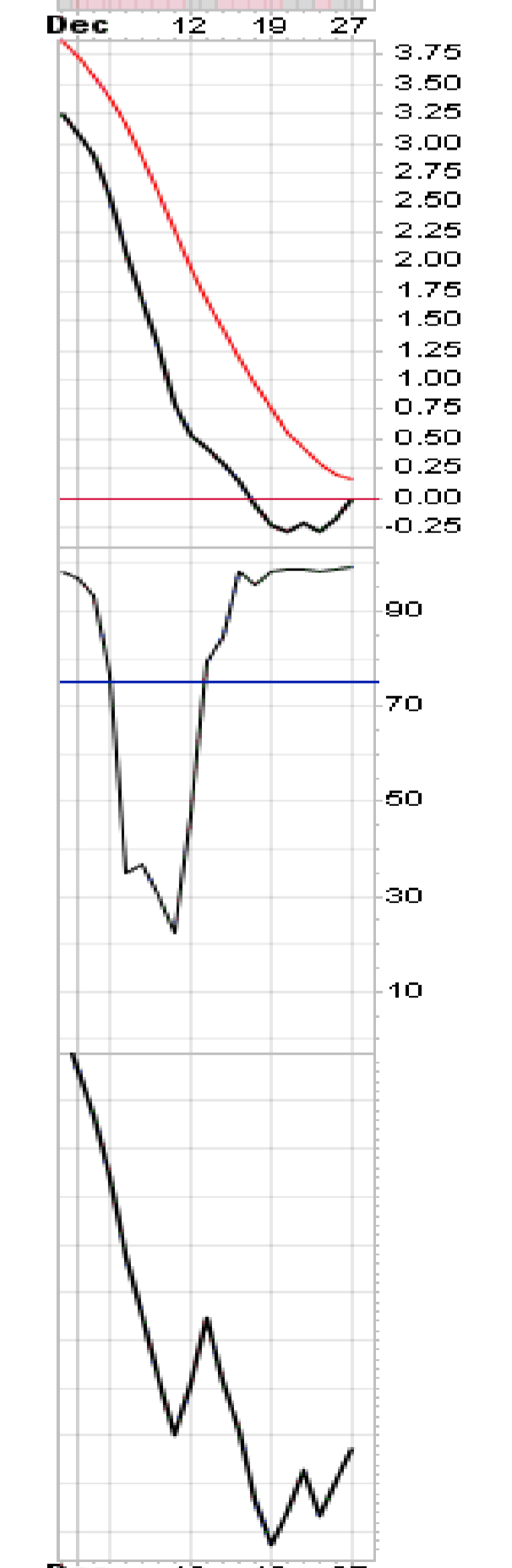
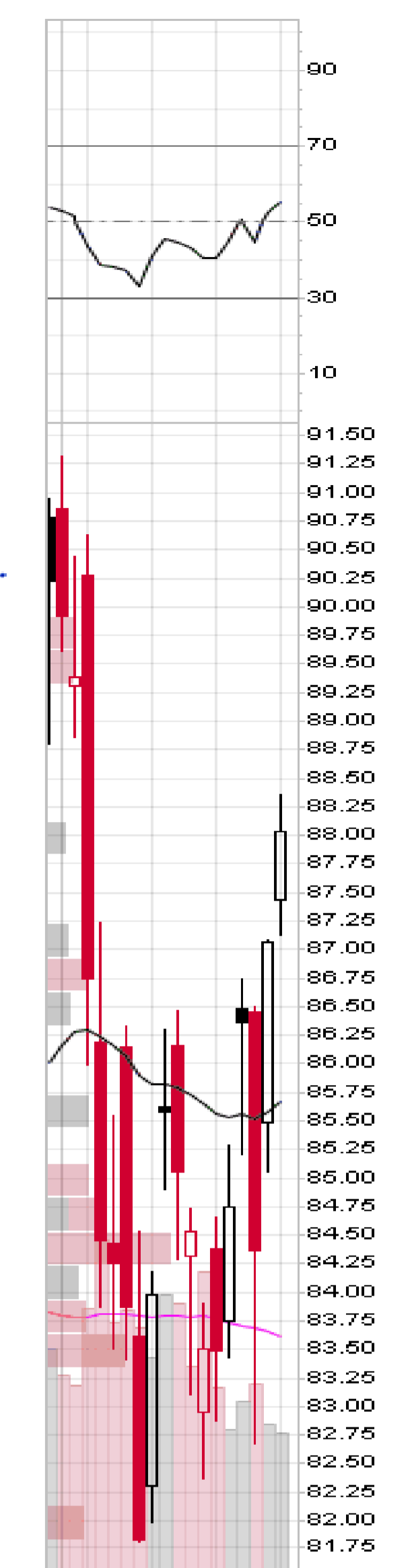
TEKNISK STYRKE

Over 75 = Bra med langsiktig teknisk styrke!



KJOP- SALGSPRESS

Mer volum inn i aksjer som faller og indikatoren viser salgspres!



WTI CRUDE - XLE - OIH

XLE Energy Select Sector SPDR Fund NYSE
27-Dec-2022
1/4 USO 69.54

USO - WTI OLJE ETF

Open 87.44 High 88.36 Low 87.12 Close 88.04 Volume 13.9M Chg +0.98 (+1.13%)

DAG PERSPEKTIV

WTI / USO sluttet svakt innenfor dagen og oppunder motstanden. Trender et brudd gjennom 72 for a bekrefte XLE bruddet!



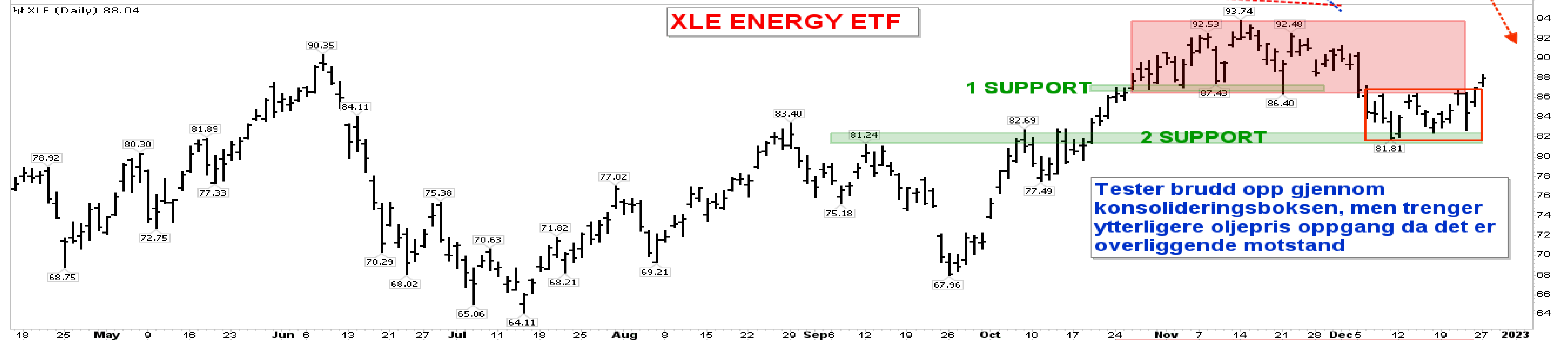
1/4 XLE (Daily) 88.04

XLE ENERGY ETF

1 SUPPORT

2 SUPPORT

Tester brudd opp gjennom konsolideringsboksen, men trenger ytterligere oljepris oppgang da det er overliggende motstand



1/4 OIH 303.80

OIH OILSERVICE ETF

1 SUPPORT

2 SUPPORT

OIH Oilservice tester brudd ut av den kortsiktige konsolideringstrenden. Vil trigge et nytt kjøpsignal gjennom 310 og da trenger den support fra WTI/Brent!



WTI CRUDE - XLE - OIH vs KORTSIKTIG 60 MIN CHART

XLE Energy Select Sector SPDR Fund NYSE

27-Dec-2022
1/4 USO 69.54

USO - WTI OLJE ETF

60 MIN PERSPEKTIV

Open 87.44 High 88.36 Low 87.12 Close 88.04 Volume 13.9M Chg +0.98 (+1.13%)

Rent teknisk kan 72/73 vaere et viktig triggerpunkt!

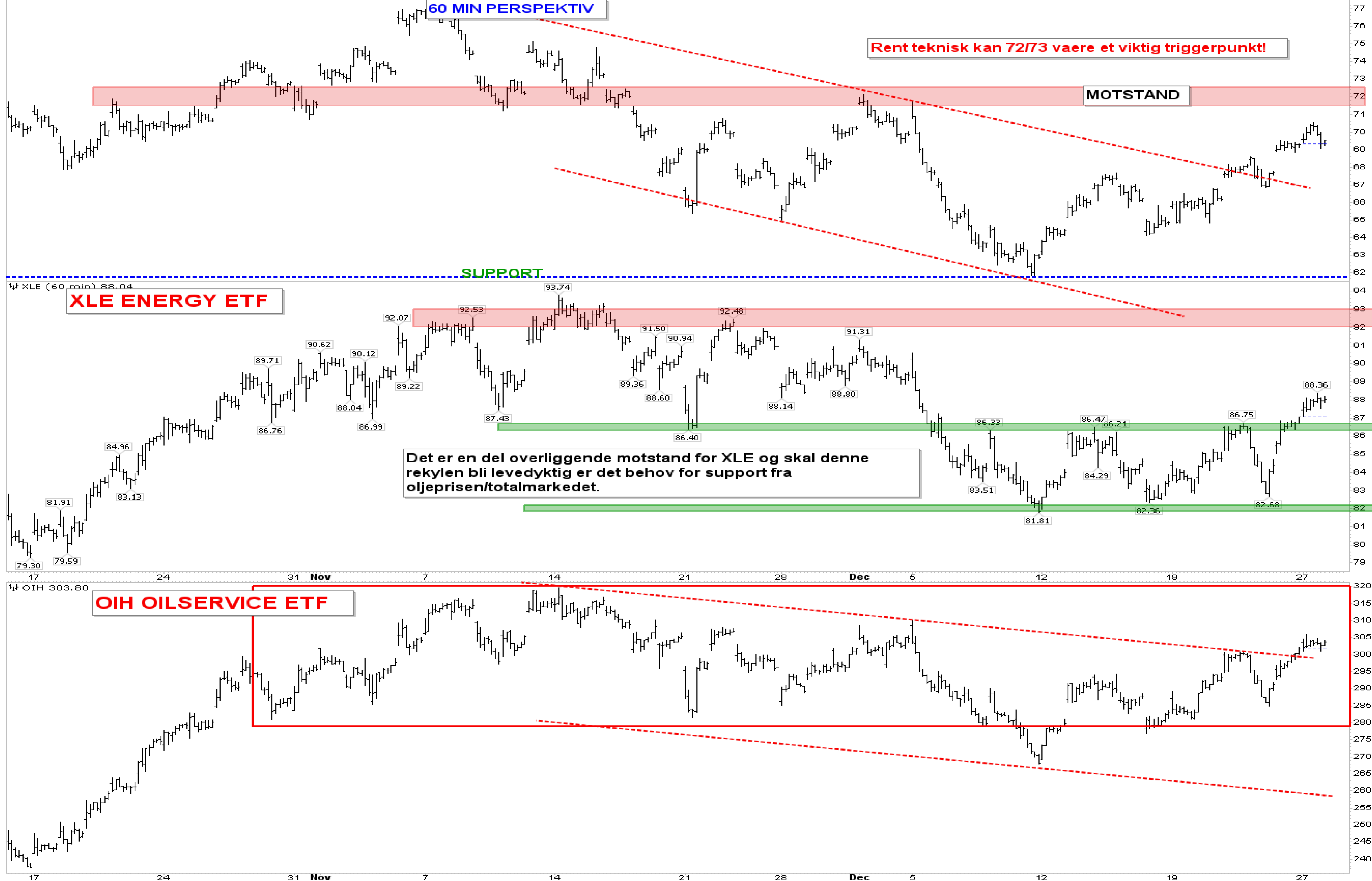
MOTSTAND

SUPPORT

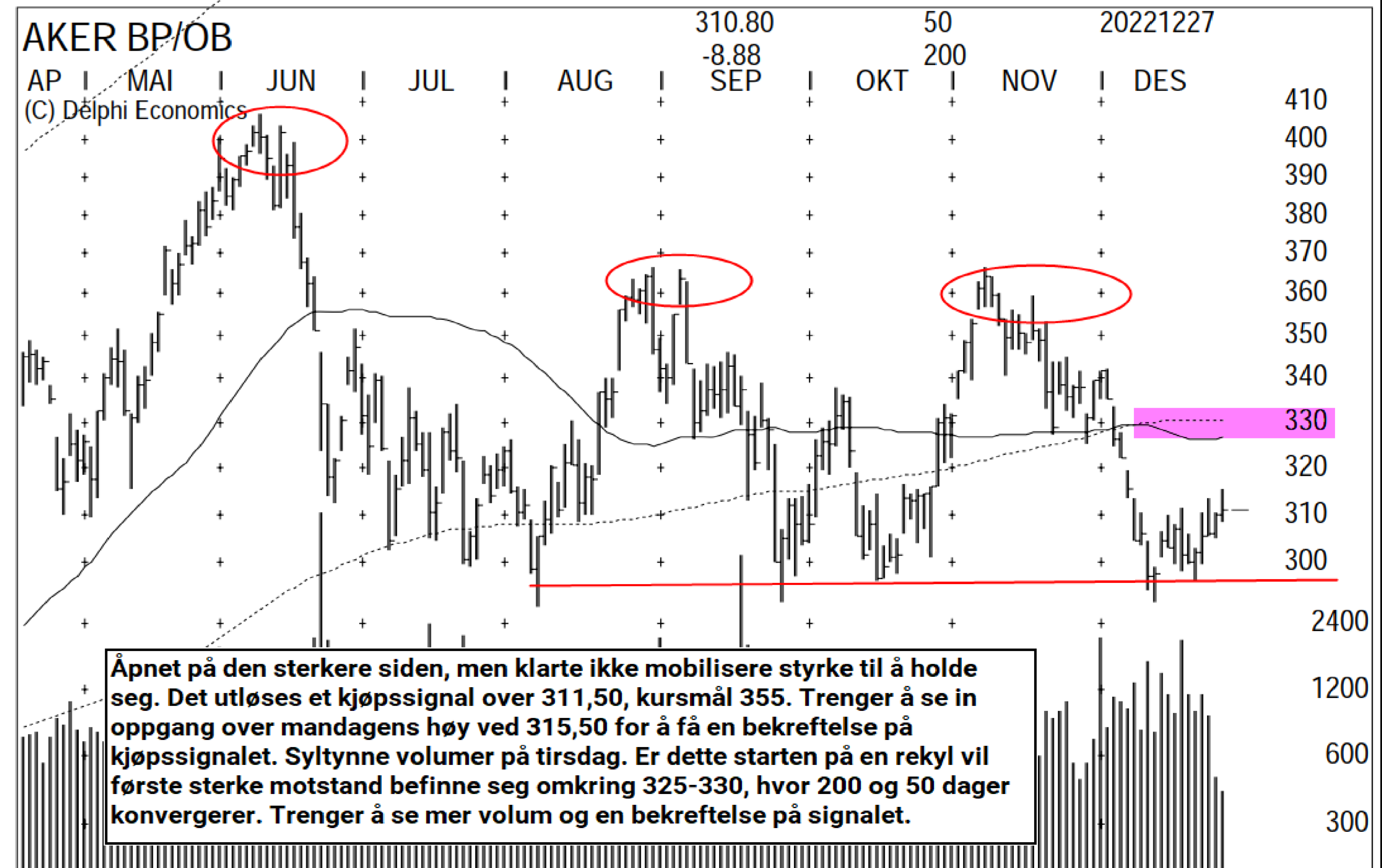
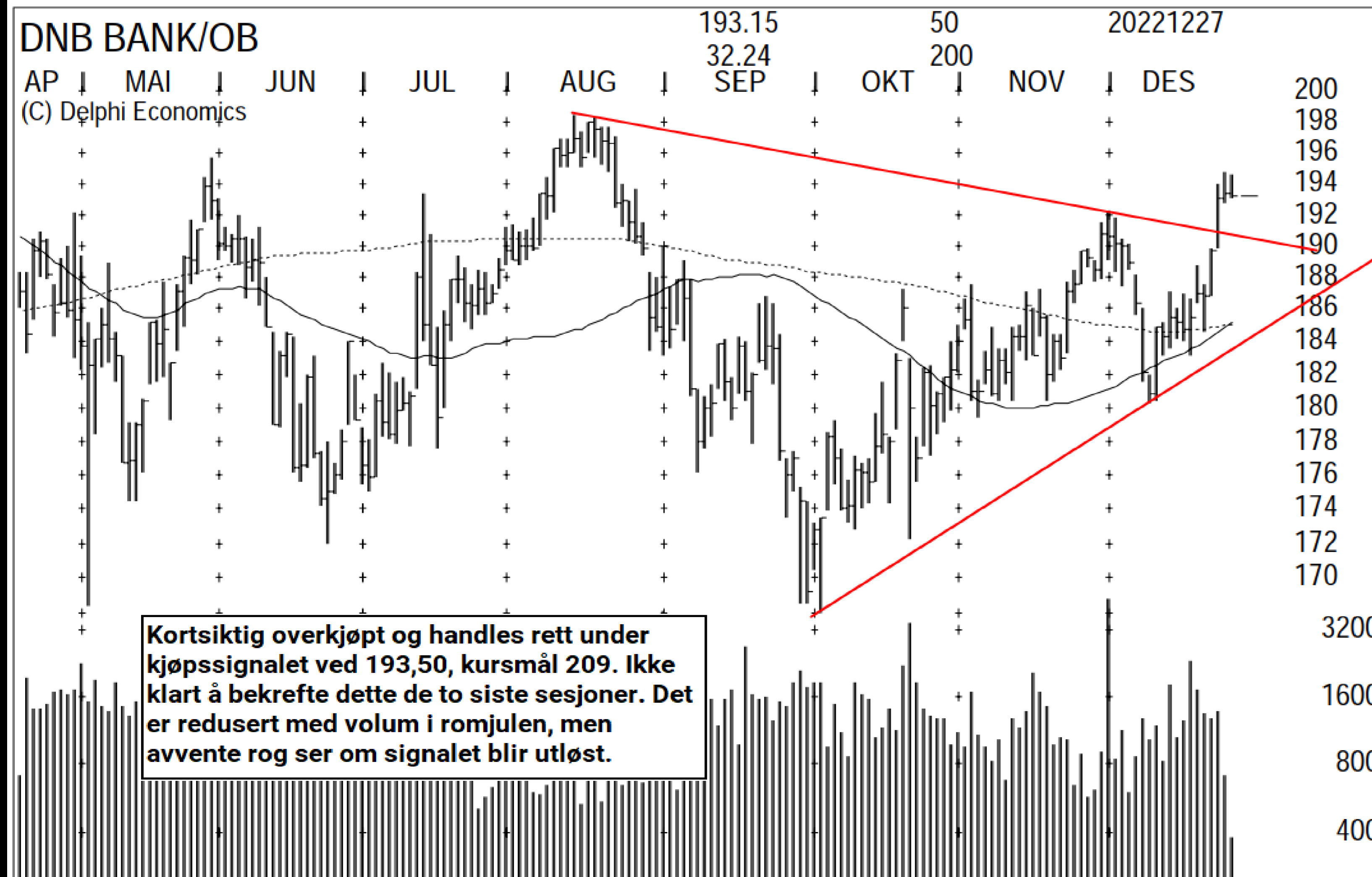
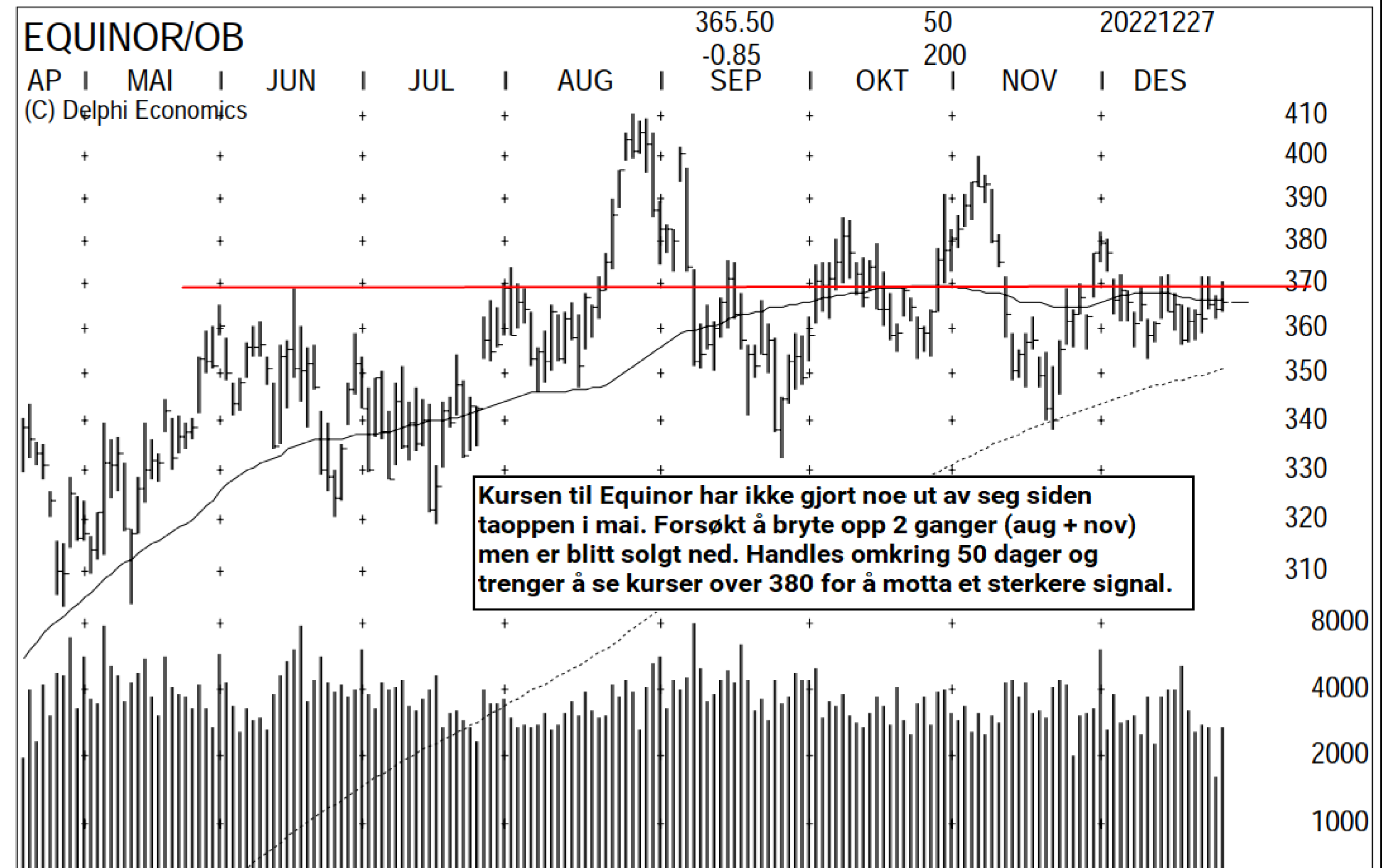
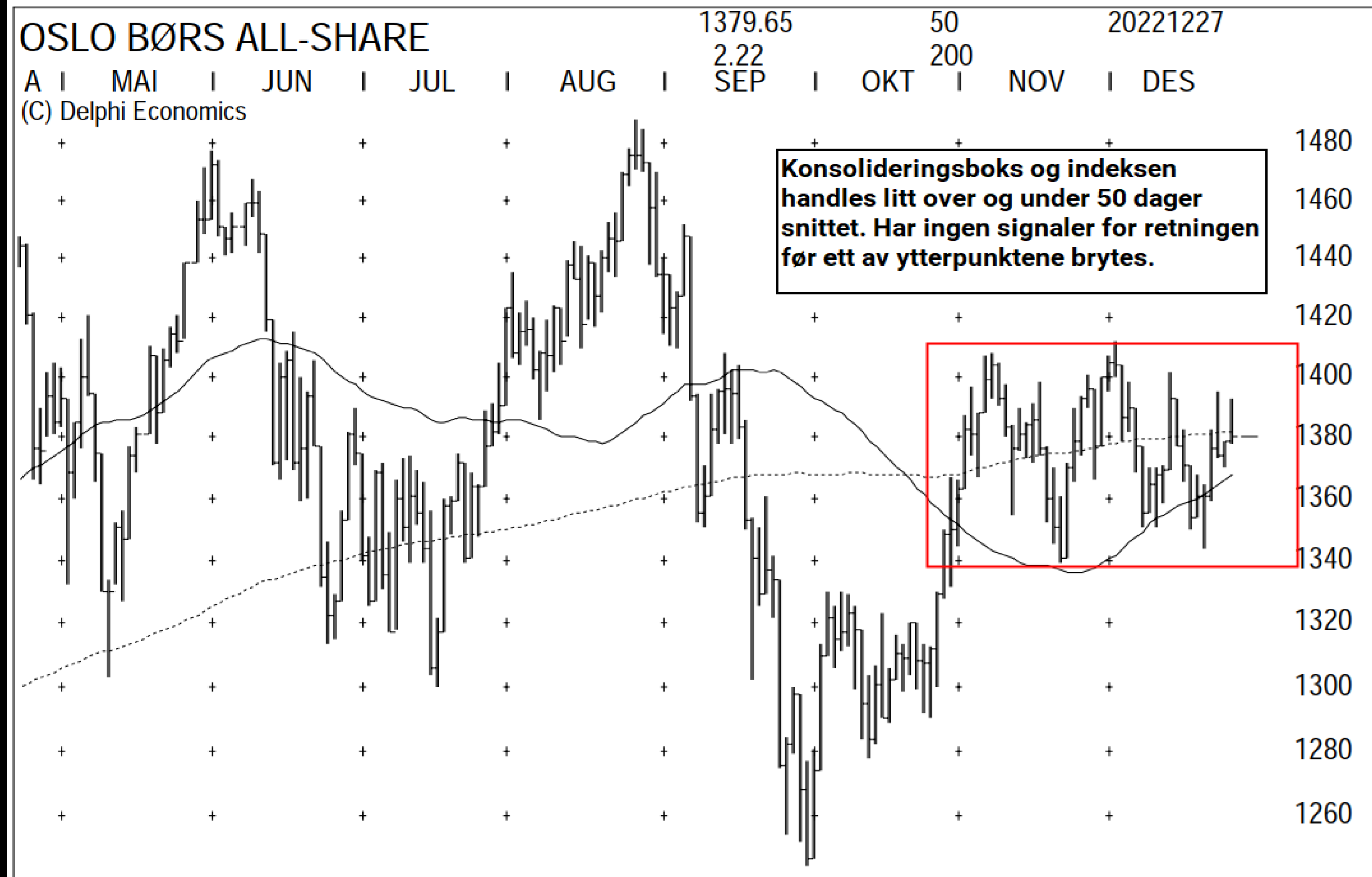
XLE ENERGY ETF

Det er en del overliggende motstand for XLE og skal denne rekylen bli levedyktig er det behov for support fra oljeprisen/totalmarkedet.

OIH OILSERVICE ETF

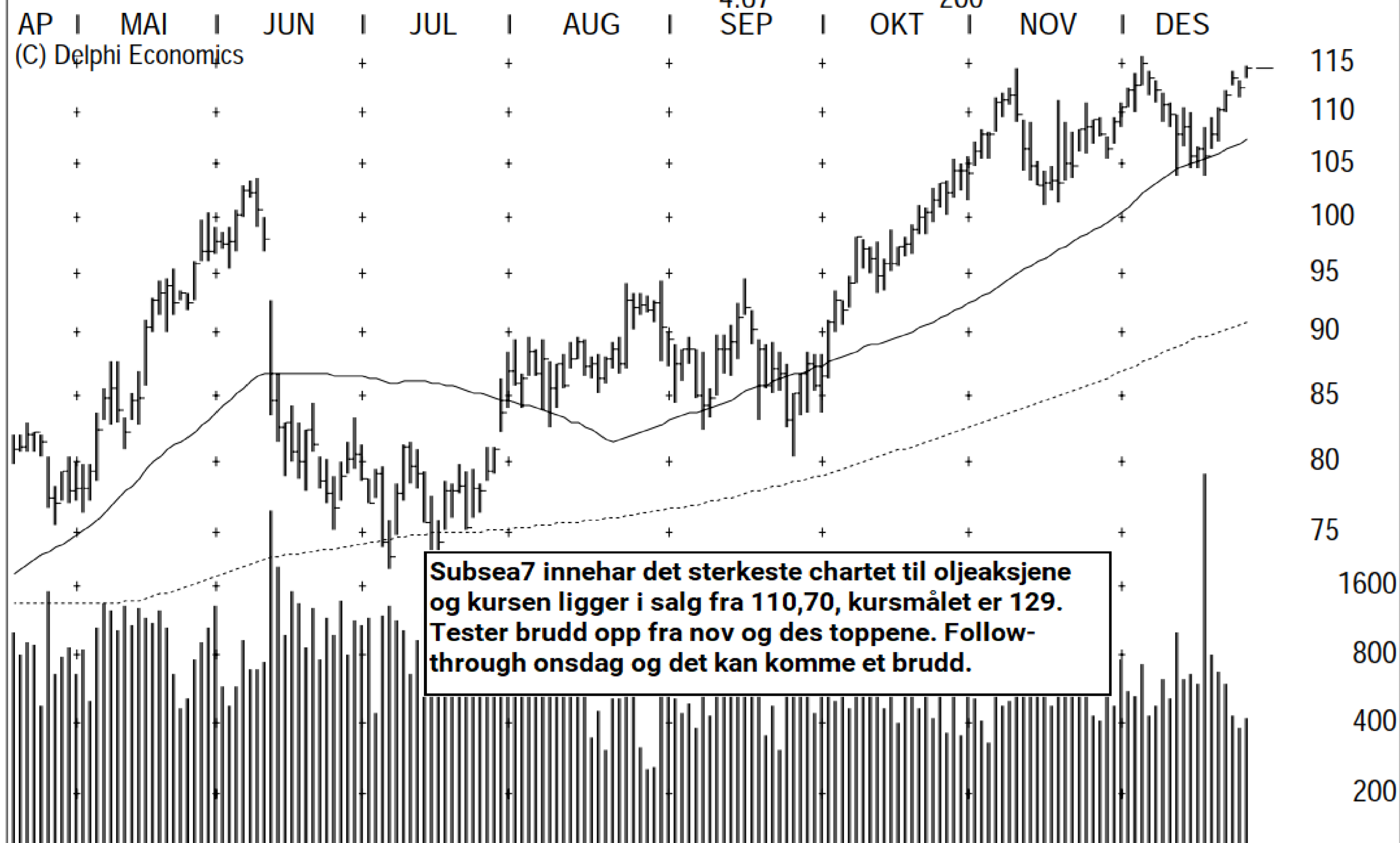


OSLO BØRS

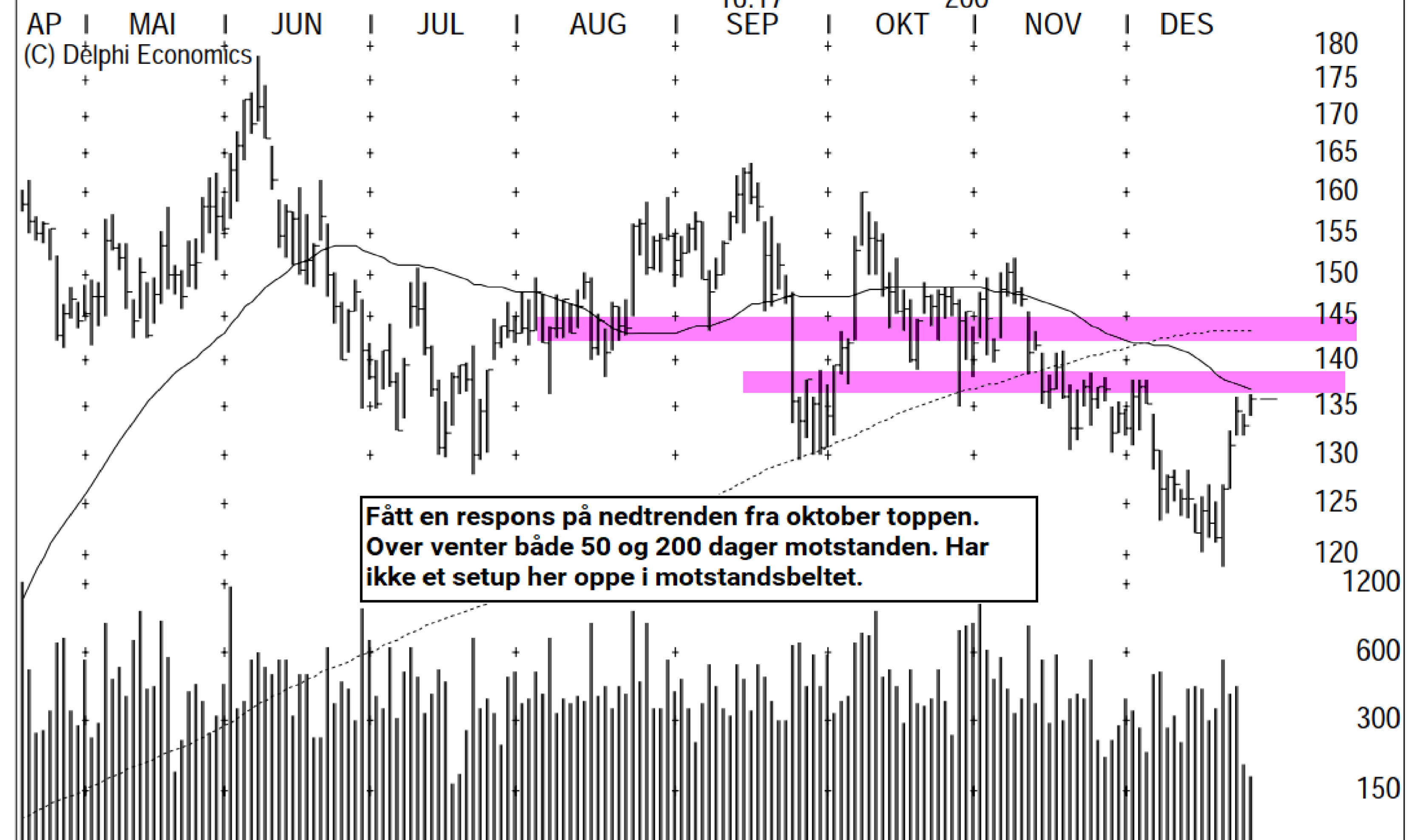


OSLO BØRS

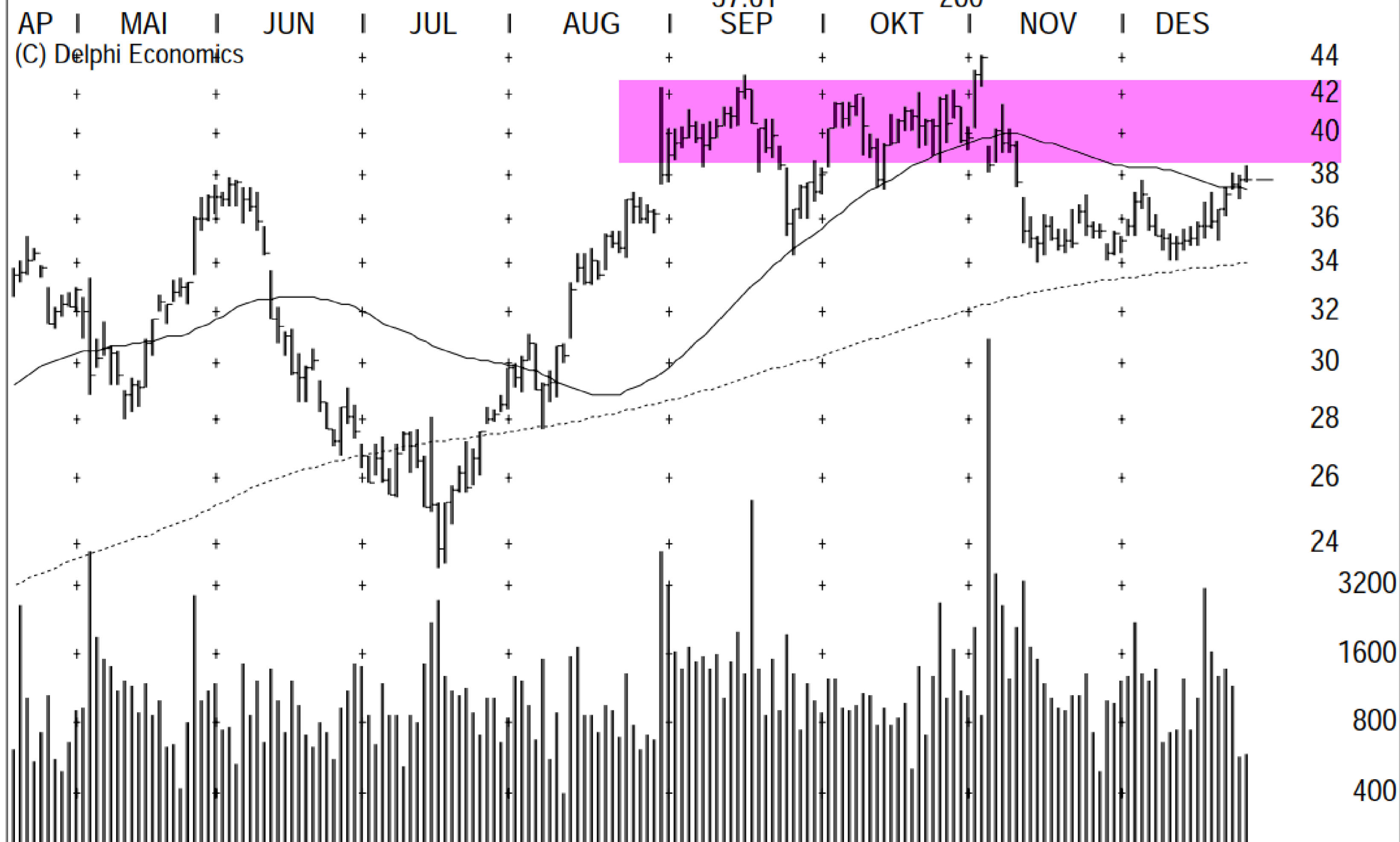
SUBSEA 7 S.A./OB



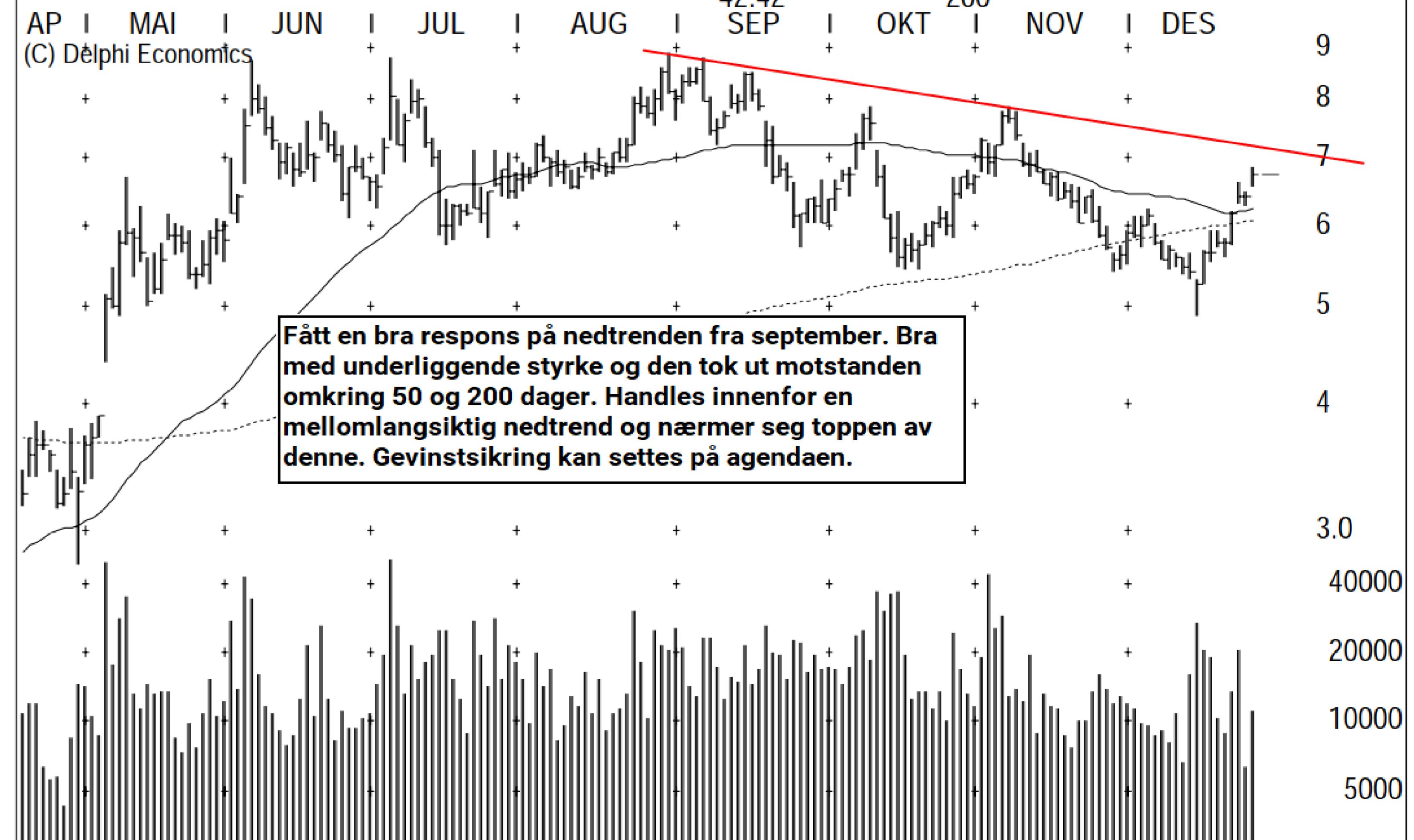
TGS-NOPEC GEOPHYSICA



AKER SOLUTIONS/OB



PETROLEUM GEO-SERVIC



OSLO BØRS

