

2023

Mandag 17. april

TEKNISK UKE RAPPORT

TaktiskInside.com
Promenaden 13,
0682 Oslo

Inside Oslo Børs

Roger Kristiansen
Roger@taktiskInside.com
+ 47 909 30 865

TRENDEN TIL DE GLOBALE MARKEDENE!

\$SPX S&P 500 Large Cap Index INDX

14 Apr 2023

S&P 500 - UKE PERSPEKTIV

Open 4085.20 High 4163.19 Low 4072.55 Close 4137.64 Volume 10.4B Chg +32.62 (+0.79%)

\$SPX (Weekly) 4137.64

MA(10) 4028.64



\$DAX 15807.50

MA(10) 15376.58

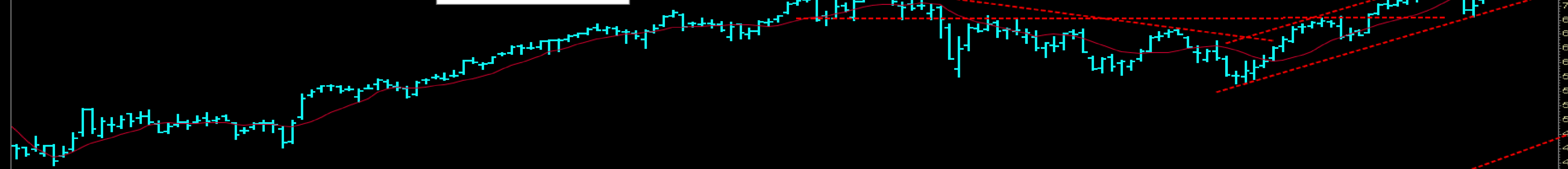
DAX



\$CAC 7519.61

MA(10) 7233.54

PARIS CAC-40



\$IBEX 9362.90

MA(10) 9182.06

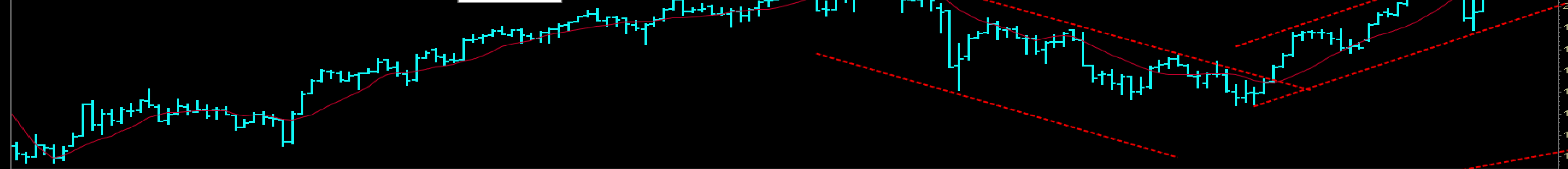
SPANIA



\$ITDOW 212.55

MA(10) 206.54

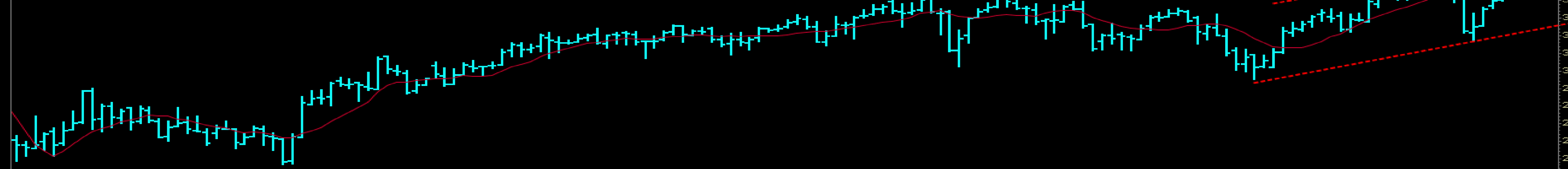
ITALIA



\$GBDOW 346.18

MA(10) 340.88

UK



FOKUS PÅ RESULTATENE TIL UKEN!

Mandag premarket: SCHW, STT;
etterbørs: JBHT;

Tirsdag premarket: BAC, GS, JNJ, LMT;
Etterbørs: ISRG, NFLX, UAL, WAL;

Onsdag premarket: ABT, BKR, CFG, ELV, MS, SYF, TRV, USB;
Etterbørs: AA, BDN, CCI, DFS, FFIV, IBM, LRCX, LVS, SLG, TSLA, ZION;

Torsdag premarket: AXP, BX, CMA, DHI, FITB, HBAN, KEY, POOL, T, TFC, UNP;
Etterbørs: CSX, KNX, PPG, STX;

Fredag premarket: FCX, HCA, PG, RF, SLB.

Fra FactSet: “The first quarter has seen the highest number of S&P 500 companies issuing negative EPS guidance for a quarter since Q3 2019 (81).

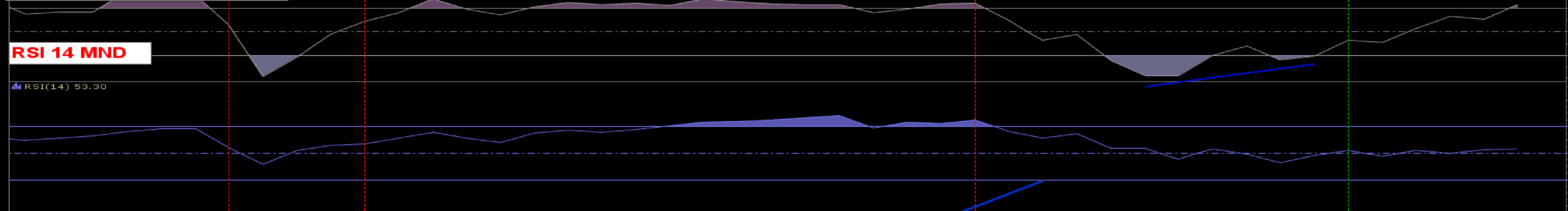
If 78 is the final number for the quarter, it will mark the fourth-highest number of companies in the S&P 500, issuing negative EPS guidance for a quarter since FactSet began tracking this metric in 2006.

On the other hand, the first quarter has also seen the lowest number of S&P 500 companies issuing positive EPS guidance for a quarter since Q2 2020 (24).”

S&P 500 - MND PERSPEKTIV

\$SPX S&P 500 Large Cap Index INDX

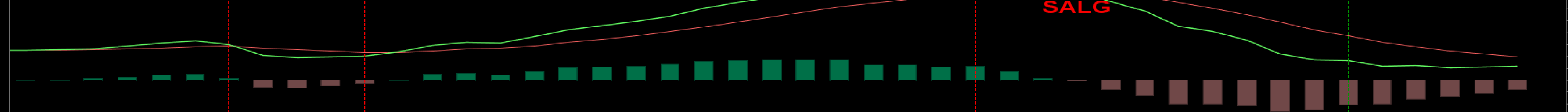
MOMENTUM INDIKATOR



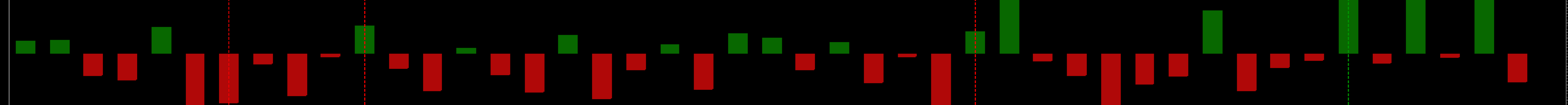
MND chartet ser ikke ut som indeksen befinner seg ved stupet. Det er oppdrift og gjennom 4200 kan det komme FOMO. Da vil det tekniske se meget bra ut!

4195 = BRUDD OPP & KJØPSSIGNAL!
3794 = BRUDD NED & SALGSSIGNAL

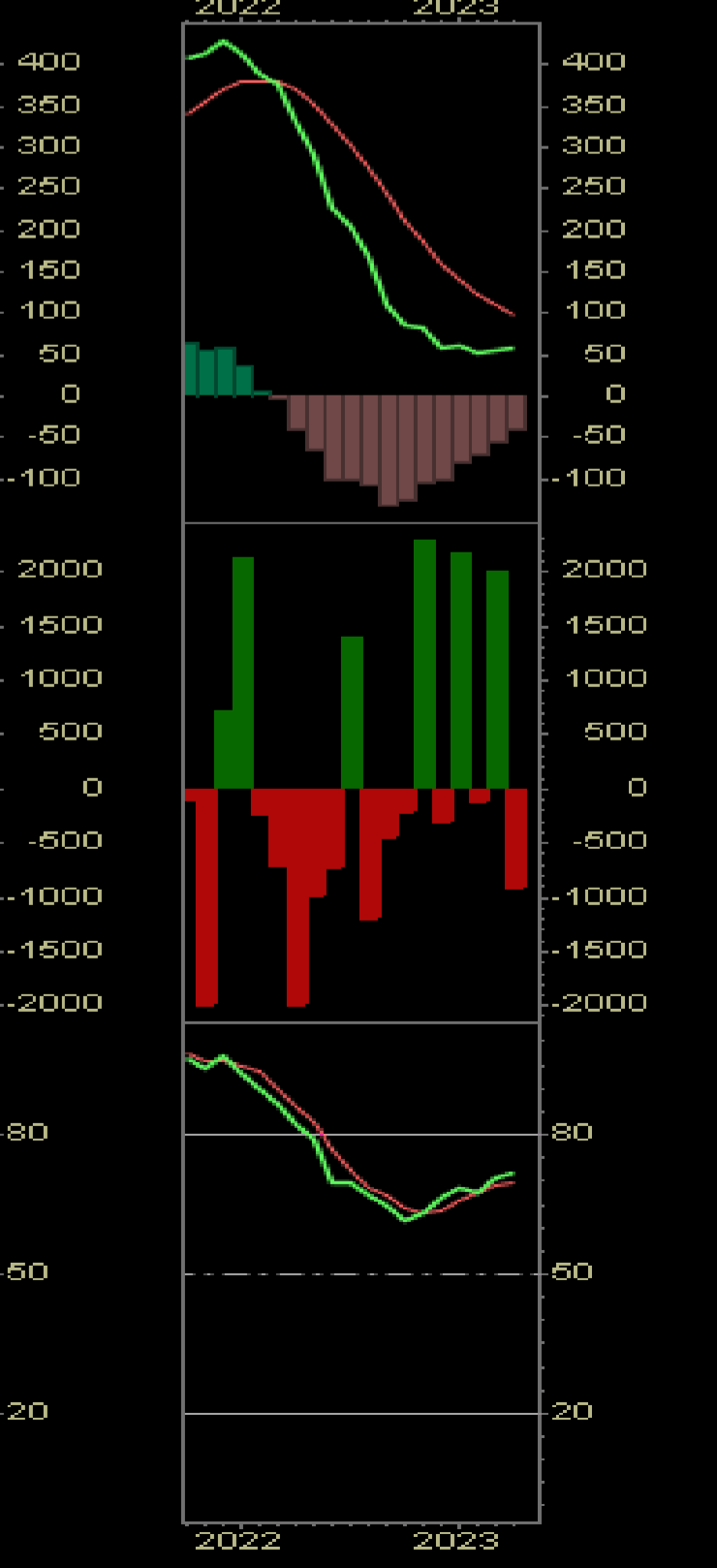
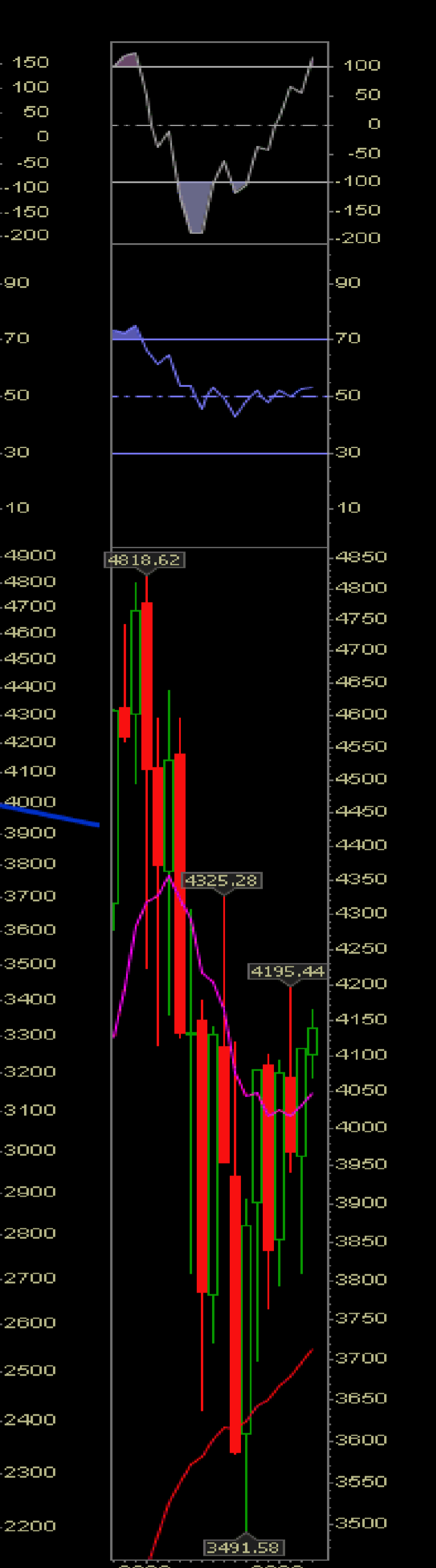
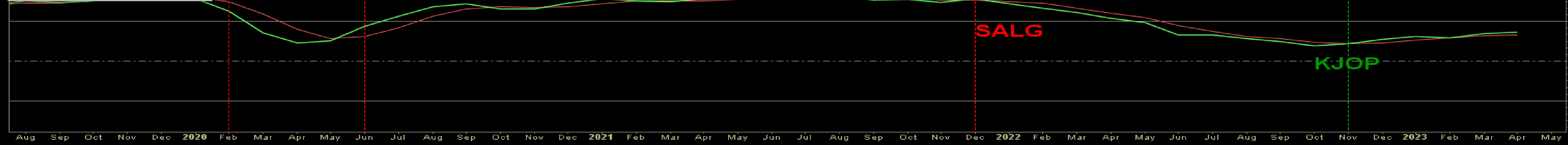
MACD - TRENDINDIKATOR



RATIO - AKKUMULERT ANTALL AKSJER SOM STIGER vs FALLER

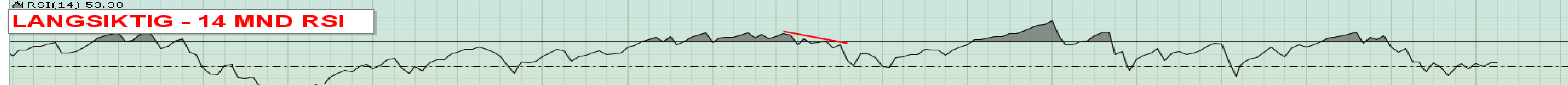
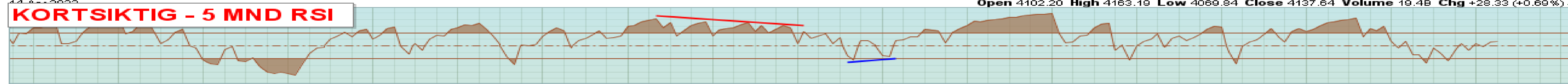


TRENDINDIKATOR

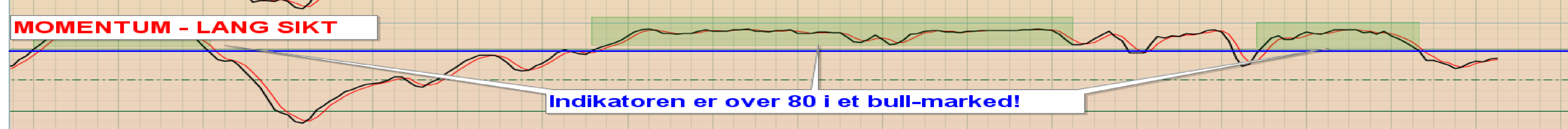


S&P 500 - LANGT MND PERSPEKTIV

\$SPX S&P 500 Large Cap Index INDXX
 Open 4102.20 High 4163.19 Low 4069.84 Close 4137.64 Volume 19.4B Chg +28.33 (+0.69%)



S&P har trendet nar momentum- kort sikt og langt sikt har brutt over 80...Den er langt unna der p.t.



Indikatoren er over 80 i et bull-marked!

06 A J 07 A J 08 A J 09 A J 10 A J 11 A J 12 A J 13 A J 14 A J 15 A J 16 A J 17 A J 18 A J 19 A J 20 A J 21 A J 22 A J 23 A J 24

S&P 500 vs TAKTISK TRENDINDIKATOR

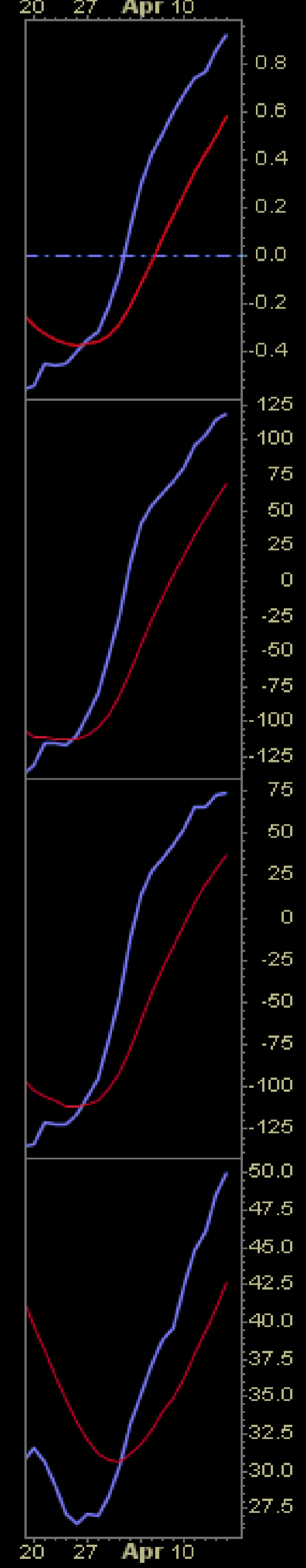
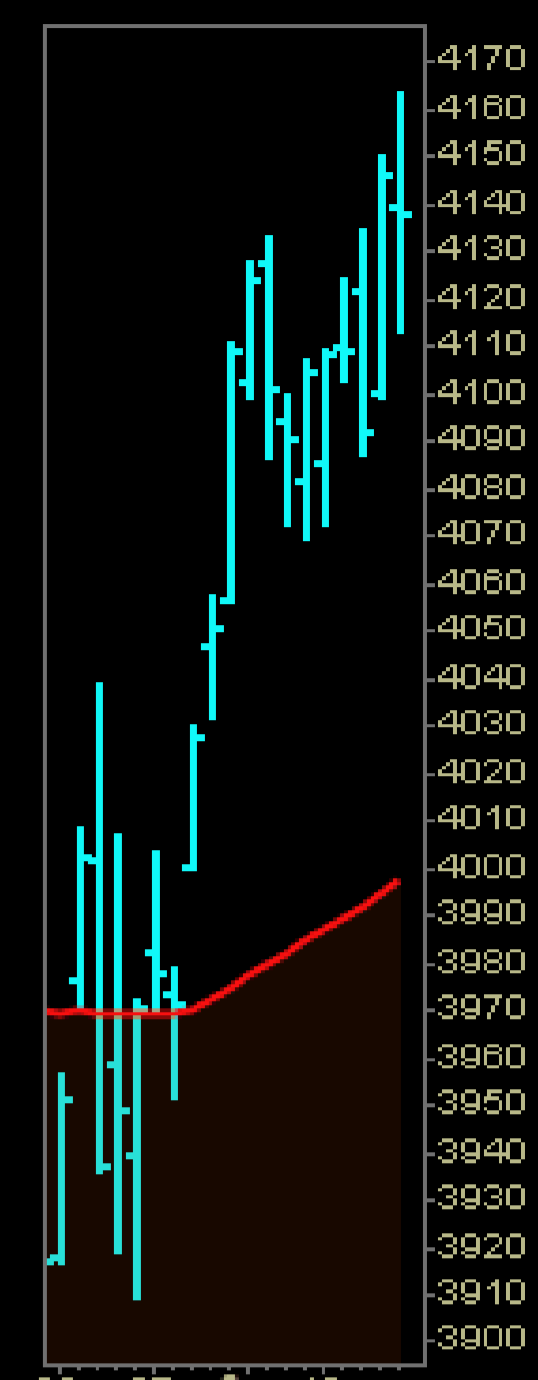
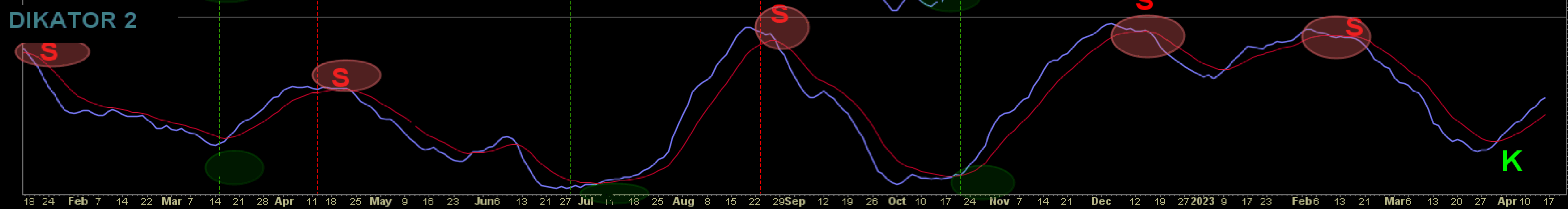
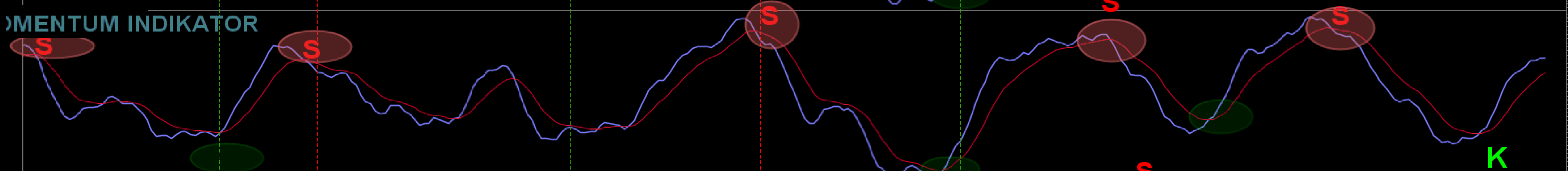
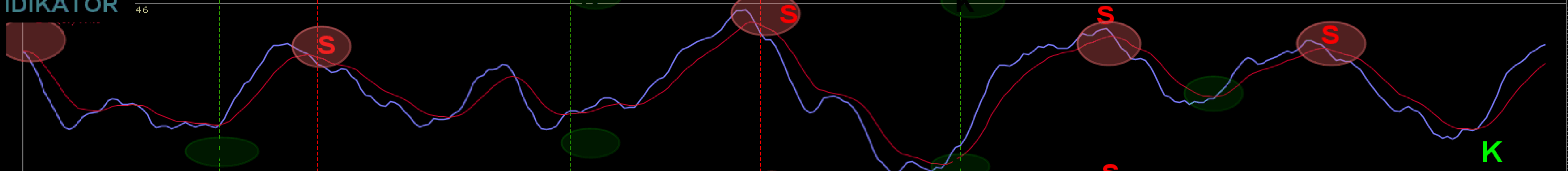
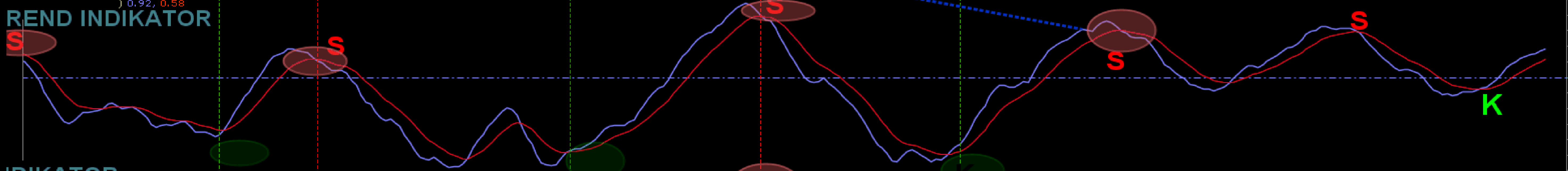
\$SPX S&P 500 Large Cap Index INDX
14-Apr-2023

Open 4140.11 High 4163.19 Low 4113.20 Close 4137.64 Volume 2.1B Chg -8.58 (-0.21%)



S&P 500 vs INDIKATORER

SPX S&P 500 Large Cap Index INDX



S&P 500 vs VIX FRYKTINDIKATOR

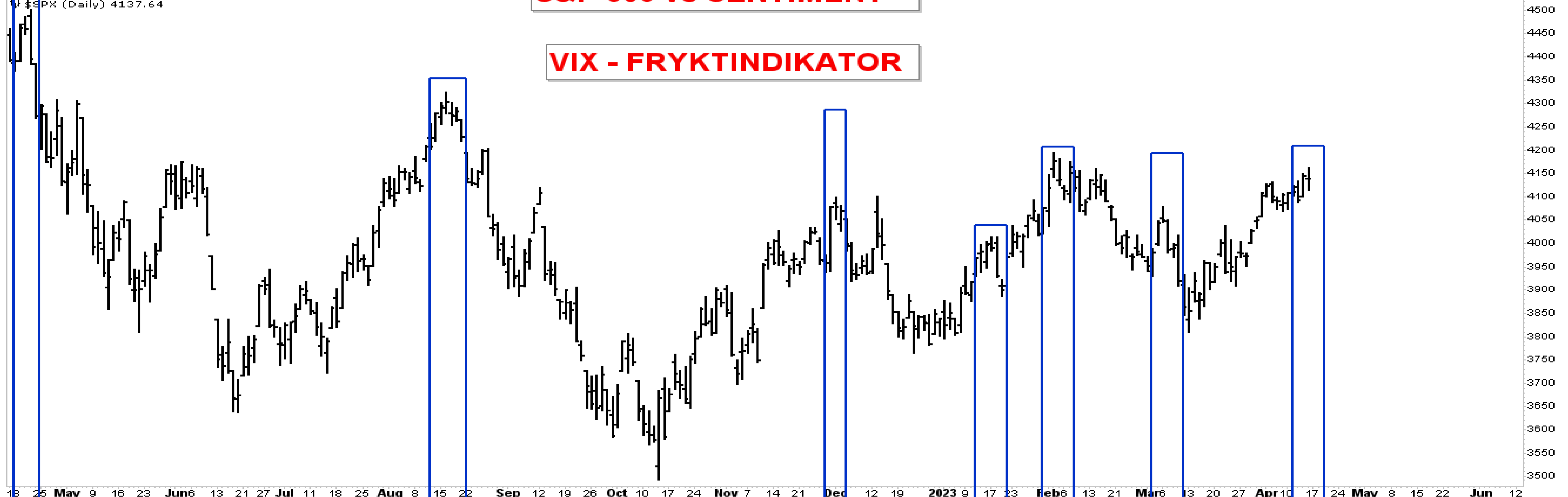
\$SPX S&P 500 Large Cap Index: INDX

14-Apr-2023
\$SPX (Daily) 4137.64

S&P 500 vs SENTIMENT

Open 4140.11 High 4163.19 Low 4113.20 Close 4137.64 Volume 2.1B Chg -8.58 (-0.21%)

VIX - FRYKTINDIKATOR



Lite med frykt - se etter signaler for topper!



VIX er en usikkerhetsfaktor da den er oppe pa nivaer som tidligere har gitt kortsiktige topper. En reversal tilbake under 4050 vil signalisere en kortsiktig topp!

Investorer preges av frykt - se etter bunner!

S&P 500 vs BREDDEN

SPY SPDR S&P 500 ETF NYSE

14-Apr-2023
 SPDR S&P 500 ETF (Daily) 412.46
 EMA(20) 405.06
 EMA(50) 400.71
 EMA(200) 397.11

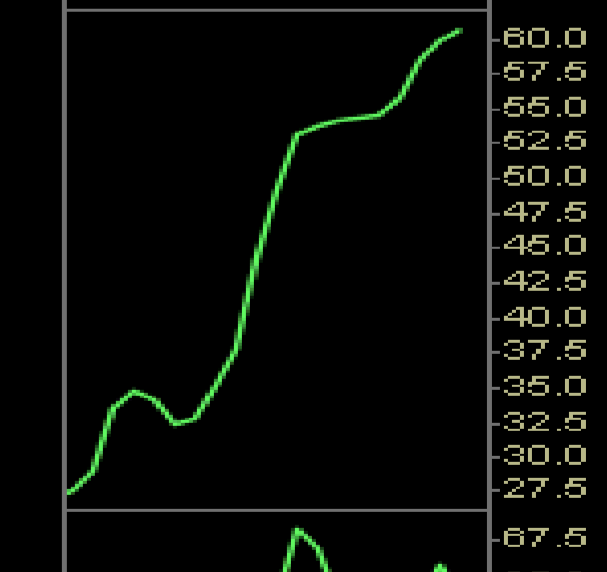
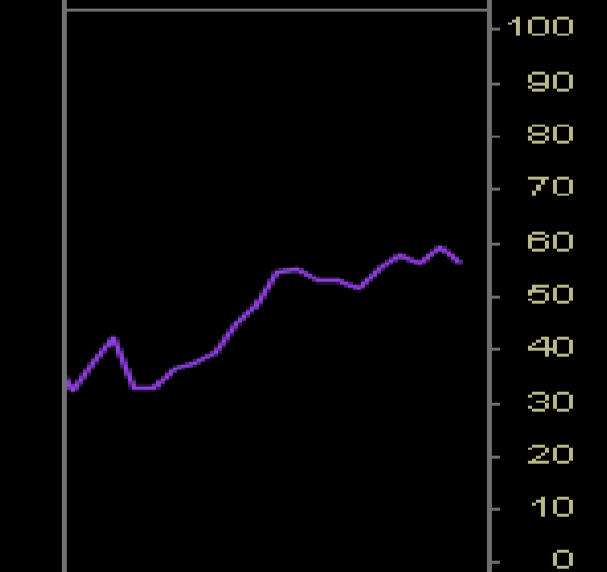
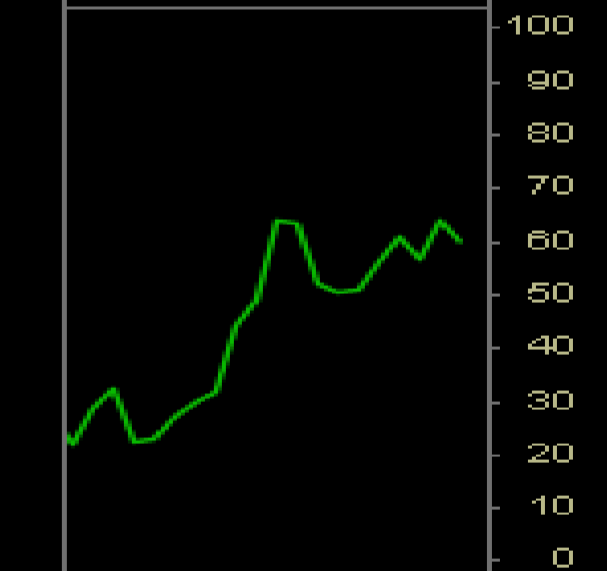
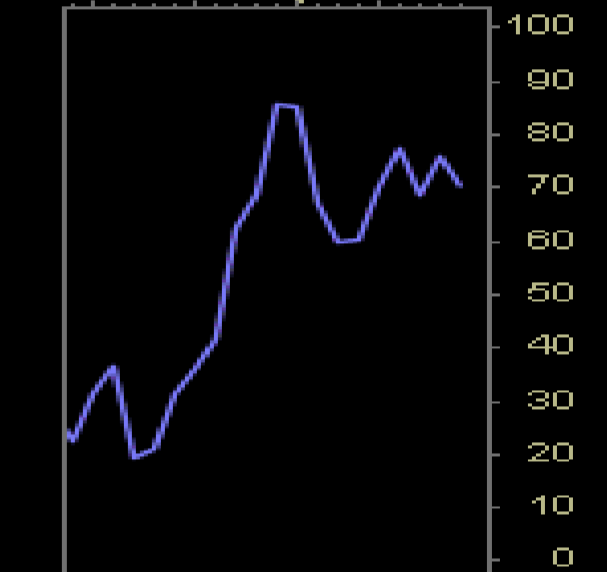
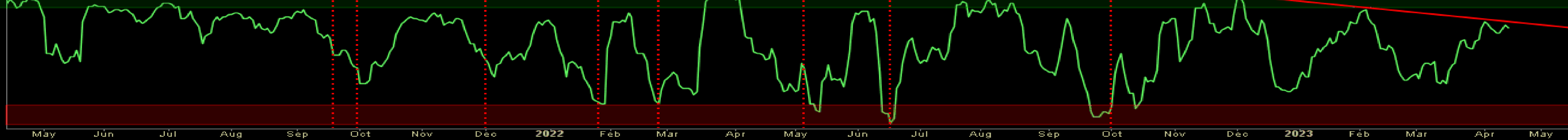
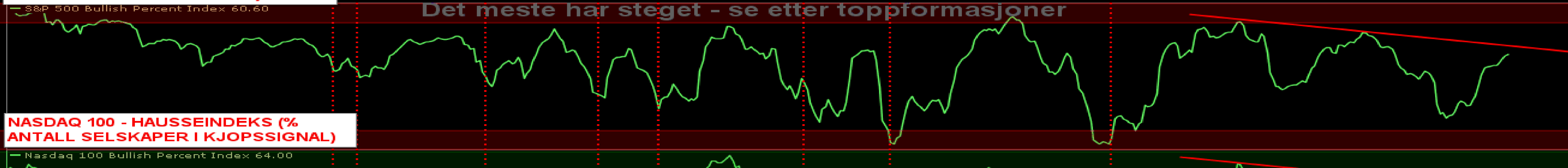
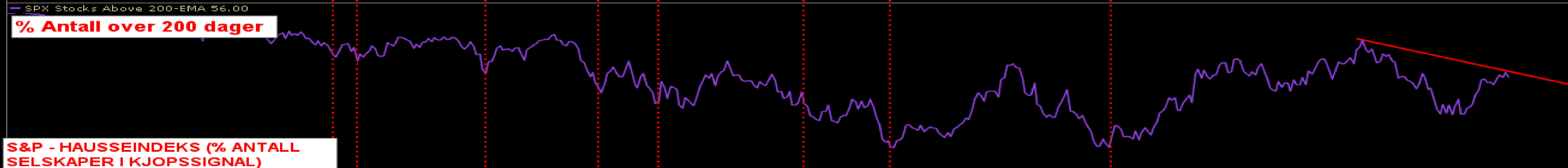
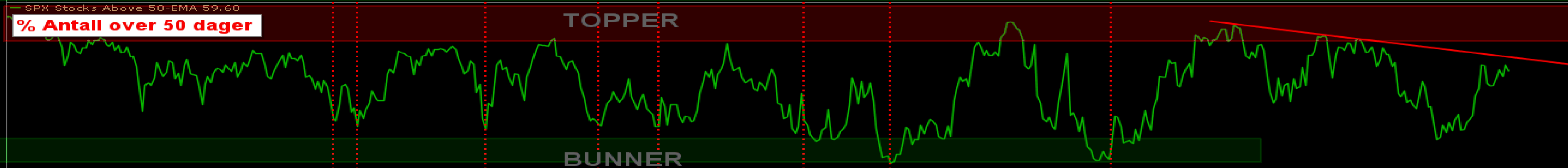
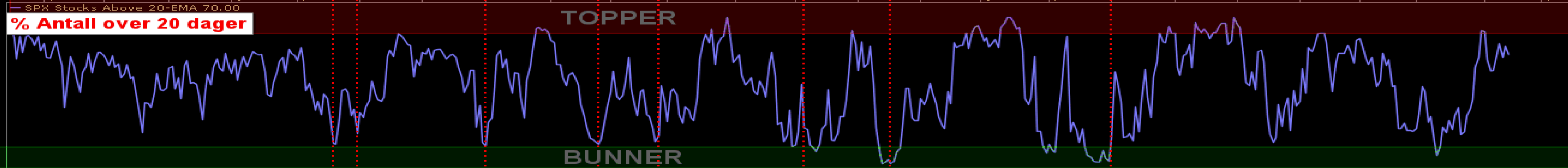
Open 412.81 High 415.09 Low 410.06 Close 412.46 Volume 78.2M Chg -1.01 (-0.24%)

© StockCharts.com



S&P 500 vs BREDDEN

80 % av selskapene var over 50 og 200 dager ved toppen i februar. Per idag er det kun 60%, hvilket gir oss en negativ divergens. Det er færre selskaper som deltar, hvilket er et negativt signal. Bredden signaliserer kortsiktige problemer.



S&P 500 vs 120 MIN PERSPEKTIV

SPY SPDR S&P 500 ETF NYSE

14-Apr-2023

RSI(14) 62.67

S&P - RSI 14

Open 412.81 High 415.09 Low 410.06 Close 412.46 Volume 78.2M Chg -1.01 (-0.24%)

© StockCharts.com

SPY (Daily) 412.46

MA(20) 403.00

MA(50) 401.52

MA(200) 391.22

S&P 500

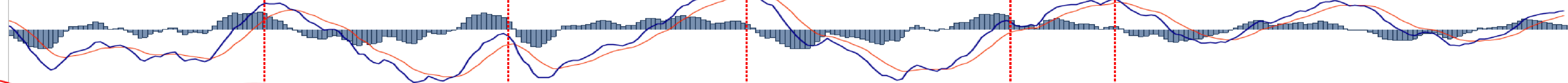
I dag chartet befinner S&P seg inne i en kortsiktig opptrend. Er per idag ikke kraftig overkjøpt. 4150 synes som et viktig motstandsbelte. Toppen av denne korte opptrenden er 4250.



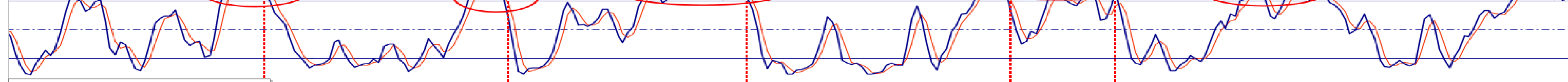
Volume 78,160,224

MA(30) 99,095,532

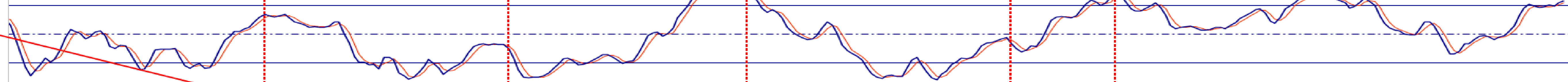
S&P 500 - MACD TRENDINDIKATOR



S&P - MOMENTUM KORT SIKT



S&P - MOMENTUM LANG SIKT



\$NDX 13079.52

MA(200) 11993.34

NASDAQ 100



90
70
50
30
10
460
455
450
445
440
435
430
425
420
415
410
405
400
395
390
385
380
375
370
365
360
355
350
345

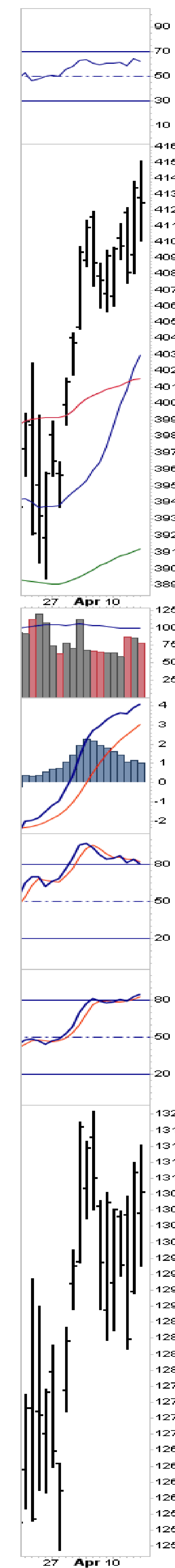
250M
200M
150M
100M
50M
25M

10.0
7.5
5.0
2.5
0.0
-2.5
-5.0
-7.5
-10.0

80
50
20

80
50
20

15600
15400
15200
15000
14800
14600
14400
14200
14000
13800
13600
13400
13200
13000
12800
12600
12400
12200
12000
11800
11600
11400
11200
11000
10800
10600
10400



S&P 500 vs OBJEKTIVE SIGNALER

\$SPX S&P 500 Large Cap Index INDX

14-Apr-2023, 16:00 ET, daily, O: 4,140.11, H: 4,163.19, L: 4,113.20, C: 4,137.64, V: 2070471424, Chg: -8.58 (-0.21%)

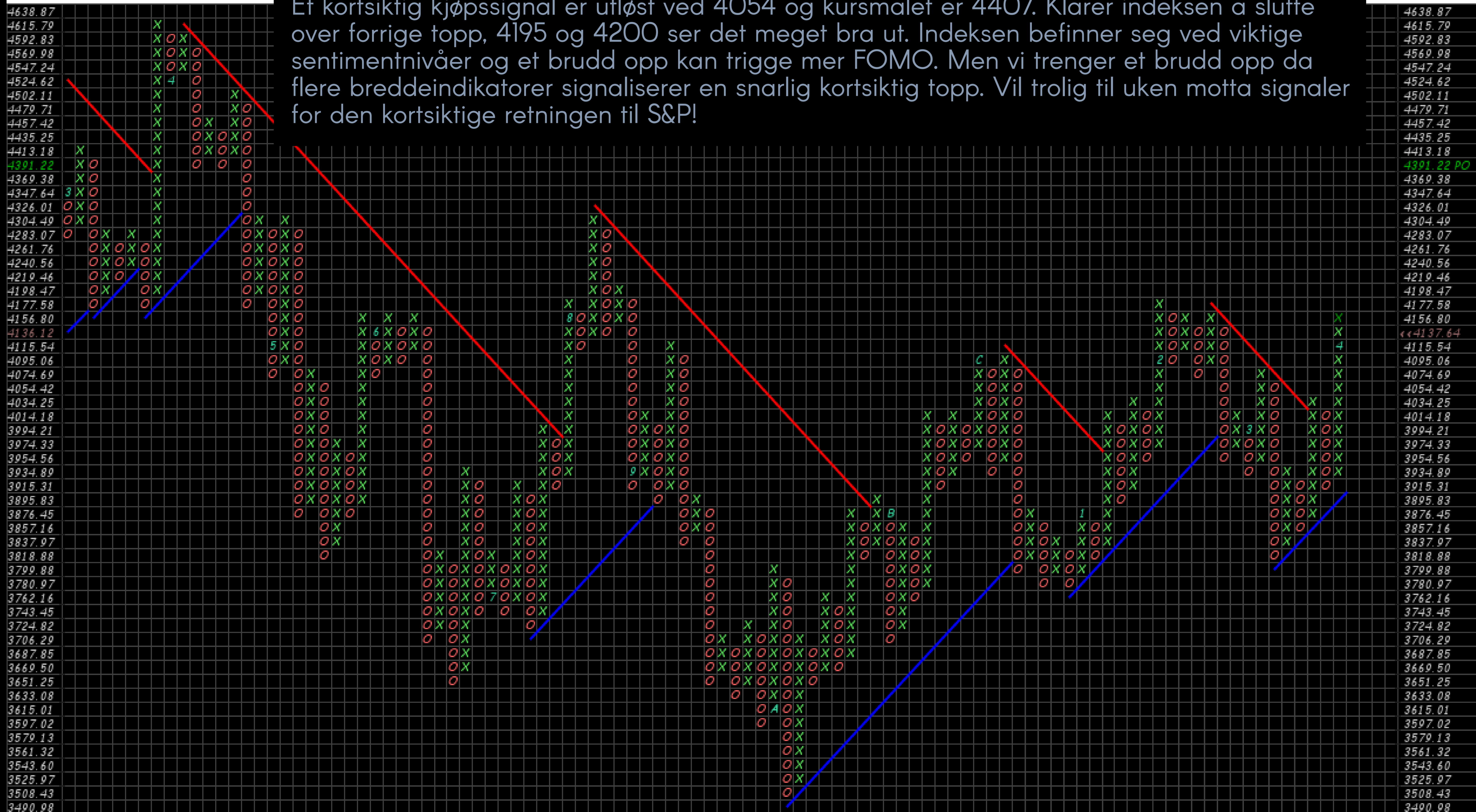
P&F Pattern Ascending Triple Top Breakout on 30-Mar-2023

Scaling: Percentage [Reversal: 3, Box Size:0.5%]

Bullish Price Objective: 4407.2

(c) StockCharts.com

Et kortsiktig kjøpssignal er utløst ved 4054 og kursmålet er 4407. Klarer indeksen å slutte over forrige topp, 4195 og 4200 ser det meget bra ut. Indeksen befinner seg ved viktige sentimentnivåer og et brudd opp kan trigge mer FOMO. Men vi trenger et brudd opp da flere breddeindikatorer signaliserer en snarlig kortsiktig topp. Vil trolig til uken motta signaler for den kortsiktige retningen til S&P!



XLE ENERGY - ØKT RISK FOR EN KORTSIKTIG TOPP!

XLE Energy Select Sector SPDR Fund NYSE
14-Apr-2023
Energy Select Sector SPDR Fund (Daily) 87.23

XLE ENERGY ETF

Open 87.19 High 87.74 Low 86.72 Close 87.23 Volume 11.8M Chg +0.16 (+0.18%)

I forrige uke var 100 % over 20 dager, 95 % over 50 dager og 83 % over 200 dager. Samtidig med denne kraftige overkjøpt situasjonen så liker jeg ikke den kortsiktige formasjonen til XLE og at den kommer opp i et belte som indikerer økt motstand. XLE nærmer seg en kortsiktig topp!

